

Fusion

AU

AGN# 088 609 661

Illustrated *P*arts *B*reakdown



Pride[®]

Your new Pride Illustrated Parts Breakdown (IPB) Manual has been compiled from the latest product information available at the time of publication. Pride[®] Mobility Products Corporation reserves the right to make changes and updates to this manual and to the product(s) it represents. Any changes, updates, or improvements to the product(s) may result in slight differences between this manual and the product you purchased.

An IPB is an illustrated parts listing of all product components which have maintenance significance. IPB's utilize "exploded" drawings to detail the individual components for each assembly and an itemized list of reference numbers, part numbers, descriptions, and quantities per assembly. Some parts may be included in an assembly but may not be available for purchase separately. Refer to the parts list to locate the part numbers for assemblies and components for ordering what you need.

To achieve proper identification and relationship of detail parts and next higher assemblies, parts listings are presented in a convenient alphanumeric reference system. Reference numbers for parent assemblies identify one part number that can be used to order all of the components listed within it. Components of an assembly will have the same alpha character as its parent assembly.

- For example, the parent assembly part number using reference number of A1 — A4 is the only number you need to place an order for parts with references of A1, A2, A3, and A4. Instead of ordering 4 separate parts, use the parent assembly part number to get the complete assembly.

Master assembly part numbers have reference numbers that include several subassemblies. By ordering parts using master assembly part numbers, you can save a lot of time and reduce the chance for error.

- For example, A1 — G10, a master assembly reference number, includes all components of assemblies A, B, C, D, E, F, and G. Use caution when ordering assemblies. Check to see if a master assembly part number exists for the components that you need. If an entire master assembly is not needed, then the individual assembly part number (i.e. for reference number G1 — G10) will be sufficient to use for ordering.

Asterisks (*) and NOTES are used throughout this service manual to point out important information regarding assembly structure and contents.

- For example, in some illustrations, only the left OR right side is shown. In other drawings, only the front OR back is depicted. The part numbers for ALL components are listed. An asterisk will also be used to indicate which components are not illustrated. Illustrated Items without callouts are shown for assembly purposes.

Updates to the contents of this IPB will be made on a regular basis. Providers may retrieve updates immediately upon their release by going to the Pride Service Website. The web address is www.prideservice.com. We welcome any questions or comments regarding the new Pride IPB Manual that you may have.

Please note that all pricing that is included with this manual is subject to change without any prior notice from Pride.

Thank you for choosing products from Pride[®] Mobility Products Corporation.

SECTION I.
Main Frame Assembly 4

SECTION II.
Caster Assembly 6

SECTION III.
Suspension, Motor Mount, and Anti-tip Assembly 8

SECTION IV.
Drive Assembly 10

SECTION V.
Controller Assembly 12

SECTION VI.
Electronics Assembly 14

SECTION VII.
Battery Tray Assembly
 40Ah 16
 NF-22 18

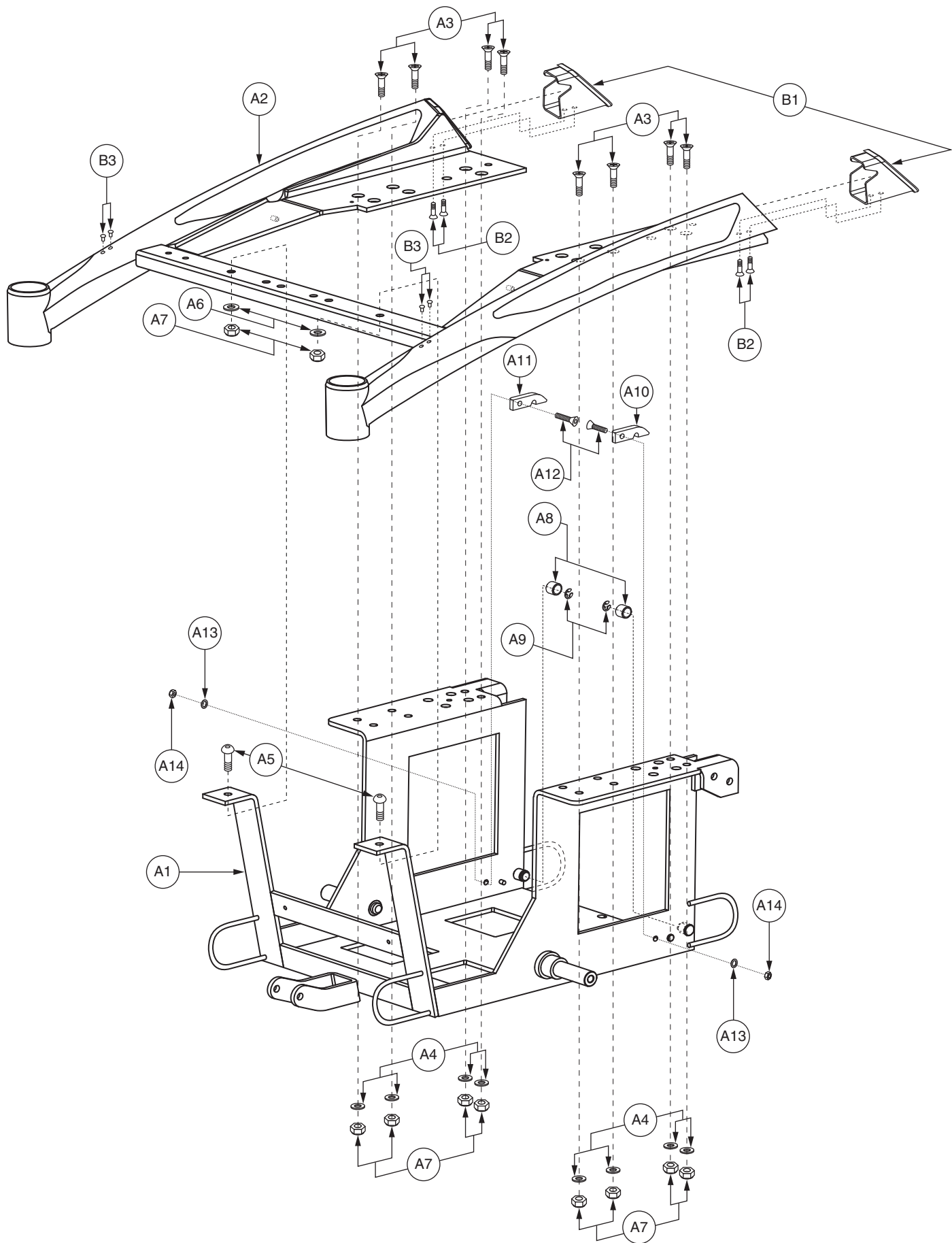
SECTION VIII.
Charger Assembly 20

SECTION IX.
Shroud Assembly 21

SECTION X.
Wheel Assembly
 Pneumatic 22
 Flat-free 23

SECTION XI.
Owner’s and Decal Packages 24

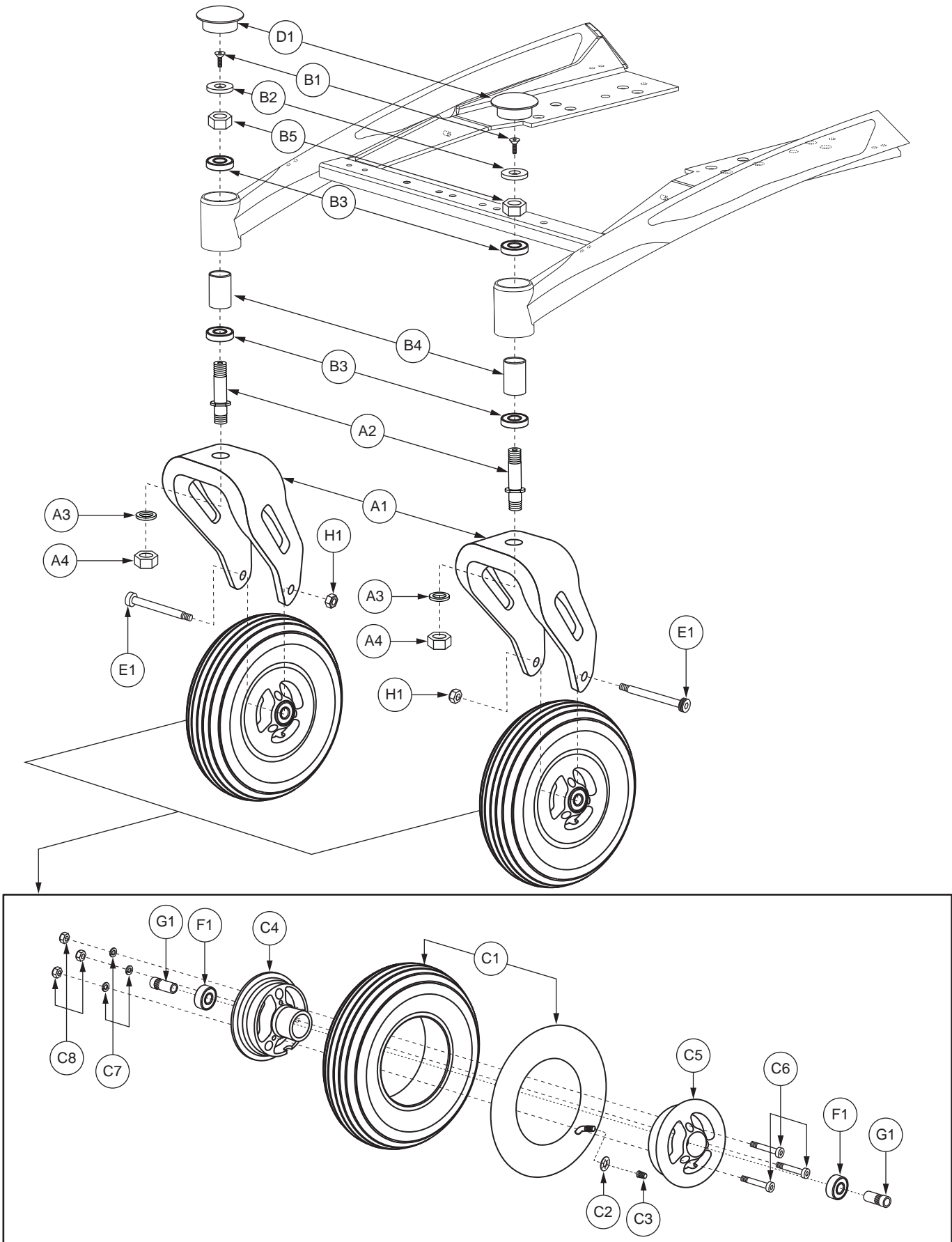
APPENDIX A.
Electrical System Diagram 25



I. Main Frame Assembly

REF #	PART #	DESCRIPTION	QTY	MSRP (AU\$) ¹¹ⁱ
A1 - A15	FRMASMB16108	FRAME,ASSY,MAIN,W/SIDE RAILS,MERCURY SILVER,QUANTUM R40	1	N/A
A1	FRMINDV1454	FRAME,WELDMENT,MAIN,BLACK,(ANI: PD16D-A-007-T)	1	N/A
A2	FRMINDV1455	FRAME,WELDMENT,SIDE RAILS,MERCURY SILVER,(ANI: PD16D-A-006-T)	1	N/A
A3	SCRSHFH1166	SCREW,SHFH,ZINC,M8-1.25 X 22MM,W/NYLON PATCH	8	N/A
A4	WASMETR1102	WASHER,FLAT,STEEL,8.4MM ID X 16MM OD X 1.6MM TH	8	N/A
A5	SCRASBH1280	SCREW,BHSCS,ZINC,M8-1.25 X 38MM,W/NYLON PATCH	2	N/A
A6	WASMETR1142	WASHER,FLAT,ZINC,8.4MM ID X 26MM OD X 3MM TH	2	N/A
A7	NUTNYLK1012	NUT,NYLOCK,ZINC,M8-1.25	10	5.36
A8	BSHSLV1033	BUSHING,SLEEVE,BRASS,10.0MM ID X 13.0MM OD X 10.0MM TH,(ANI: PD16D-P-054-T)	2	N/A
A9	RNGRTAN1023	RETAINING RING,E-CLIP,BLACK ZINC,0.25"	2	5.36
A10	FRMINDV1456	FRAME,BATTERY TRAY GUIDE,BLACK,LEFT,(ANI: PD16D-P-055-T)	1	N/A
A11	FRMINDV1457	FRAME,BATTERY TRAY GUIDE,BLACK,RIGHT,(ANI: PD16D-P-054-T)	1	N/A
A12	SCRSHFH1167	SCREW,SHFH,BLACK ZINC,M6-1.0 X 21MM,W/NYLON PATCH	2	N/A
A13	WASMETR1036	WASHER,FLAT,BLACK ZINC,6.35MM ID X 13MM OD X 1MM TH,METRIC	2	5.36
A14	NUTNYLK1019	NUT,NYLOCK,BLACK ZINC,M6-1.0	2	5.36
A15	PLSINDV1296	BATTERY SPACER,BLACK,WEDGE,(ANI: PD16D-P-133-C)	2	N/A
B1 - B3	PLSASMB2160	COVER,ASSY,SIDE RAIL/REAR CAP,QUANTUMR40	2	N/A
B1	PLSINDV1284	COVER,BLACK,REAR END CAP,(ANI: PD16D-P-001-C)	1	N/A
B2	SCRSHFH1173	SCREW,SHFH,ZINC,M6-1.0 X 12MM,W/NYLON PATCH	2	N/A
B3	PLSINDV1285	COVER,BLACK,SIDE RAIL CAP,(ANI: PD16D-P-048-T)	2	N/A

II. Caster Assembly



II. Caster Assembly

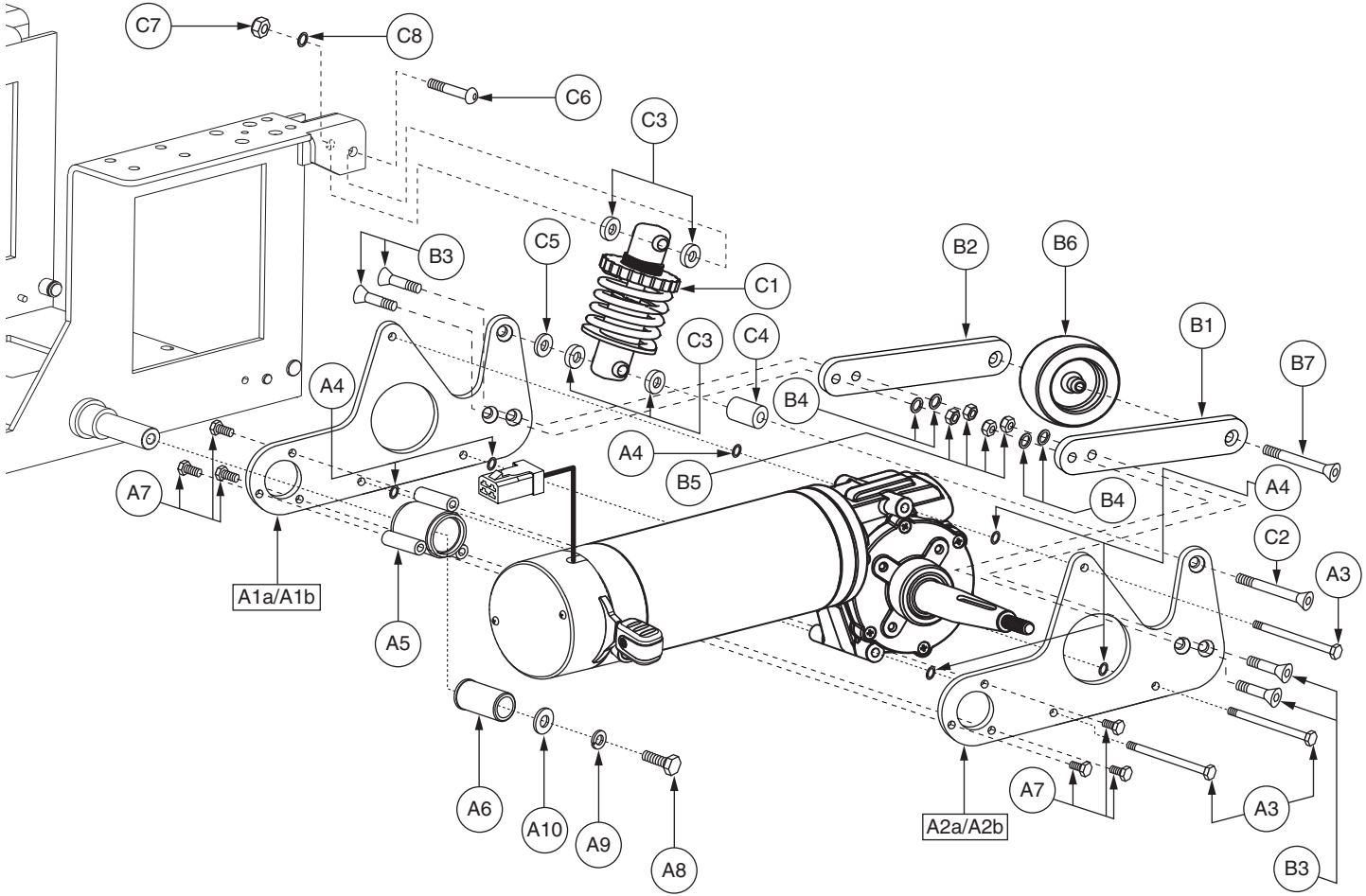
REF #	PART #	DESCRIPTION	QTY	MSRP (AU\$)
A1 - H1	FRMASMB16111	CASTER,ASSY,PNEUMATIC,9" WHEEL,W/FORK,QUANTUMR40,PAIR	1	N/A
*A1a - H1	FRMASMB16083	CASTER,ASSY,PNEUMATIC,9" WHEEL,W/FORK,QUANTUMR40,RIGHT	1	N/A
*A1b - H1	FRMASMB16082	CASTER,ASSY,PNEUMATIC,9" WHEEL,W/FORK,QUANTUMR40,LEFT	1	N/A
A1 - A4	FRMASMB16084	FORK,ASSY,CASTER,9",QUANTUM R40	1	N/A
A1	FRMINDV1460	FORK,WELDMENT,9",CASTER,(ANI: DE16D-E-010-C)	1	N/A
A2	HDWINDV1203	PIVOT STUD,CASTER FORK,ZINC,5/8"(TOP),5/8"(BOTTOM),(ANI: DE16D-P-049C)	1	N/A
A3	WASLOCK1042	WASHER, LOCK,ZINC,.625"ID X 1.05"OD X .175"THK	1	5.36
A4	NUTNJAM1022	NUT,NYLOCK JAM,ZINC,5/8-18	1	5.36
B1 - B5	HDWASMB1172	ANTI-FLUTTER,ASSY,CASTER WHEEL,QUANTUM R40	1	N/A
B1	SCRSHFH1168	SCREW,SHFH,BLACK ZINC,M5-.8 X 21MM,W/NYLON PATCH	1	N/A
B2	HDWINDV1204	JAM PLATE,BLACK,(ANI: OS16D-P-142-C)	1	N/A
B3	BRGSLV1072	BEARING,BALL,0.625" ID X 1.375" OD X 0.437" TH,56202Z,(ANI: DE16D-P-086-C)	2	N/A
B4	SPCINDV1002	SPACER,ZINC,0.625" ID X 0.75" OD X 1.0" TH,(ANI: DE16D-P-051-C)	1	N/A
B5	NUTNJAM1022	NUT,NYLOCK JAM,ZINC,5/8-18	1	5.36
C1 - C8	WHLASMB2118	WHEEL,ASSY,PNEUMATIC,SILVER RIM/GRAY TIRE,9"	1	224.92
C1	TIRPNEU1085	TIRE,PNEUMATIC,GRAY,2.80/2.50-4",W/TUBE & VALVE CAP,(ANI: OS16D-P-230-C)	1	N/A
C2	DWR7700A010	SLIP COVER,VALVE STEM,35PSI,2.4 BAR,MAX RATING,A-7700-010	1	5.36
C3	PLSINDV1003	CAP,BLACK,VALVE	1	5.36
C4	WHLRIMS1238	WHEEL,RIM,SILVER,INNER,(ANI: OS16D-P-232-C)	1	N/A
C5	WHLRIMS1239	WHEEL,RIM,SILVER,OUTER,W/VALVE STEM HOLE,(ANI: OS16D-P-233-C)	1	N/A
C6	SCRSHCS1256	SCREW,SHCS,BLACK ZINC,M6-1.0 X 38MM,GRADE 8.8	3	N/A
C7	WASLOCK1003	WASHER,LOCK,ZINC,M6	3	5.36
C8	NUTNYLK1019	NUT,NYLOCK,BLACK ZINC,M6-1.0	3	5.36
D1	PLSINDV1280	COVER,BLACK,1.50" DIA,CASTER CAP,(ANI: DE16D-P-050-C)	1	3.86
E1	SCRSHCS1311	SCREW,SHCS,BLACK ZINC,M8-1.25 X 100MM	1	N/A
F1	BRGSLV1073	BEARING,BALL,12MM ID X 28MM OD X 8MM TH,56001Z,(ANI: TD16S-P-125-C)	2	6.42
G1	BSHFLNG1076	BEARING,FLANGE,ZINC,8MM ID X 12MM OD X 37MM TH X 14MM FOD X 10MM FTH,KNURLED,(ANI: DE16D-P-037-C)	2	2.58
H1	NUTNYLK1011	NUT,NYLOCK,BLACK ZINC,M8-1.25	1	5.36

Notes :

*A1a - H1
*A1b - H1

Both assemblies contain identical parts. There are right and left sides for assembly purposes.
Both assemblies contain identical parts. There are right and left sides for assembly purposes.

III. Suspension, Motor Mount, and Anti-tip Assembly



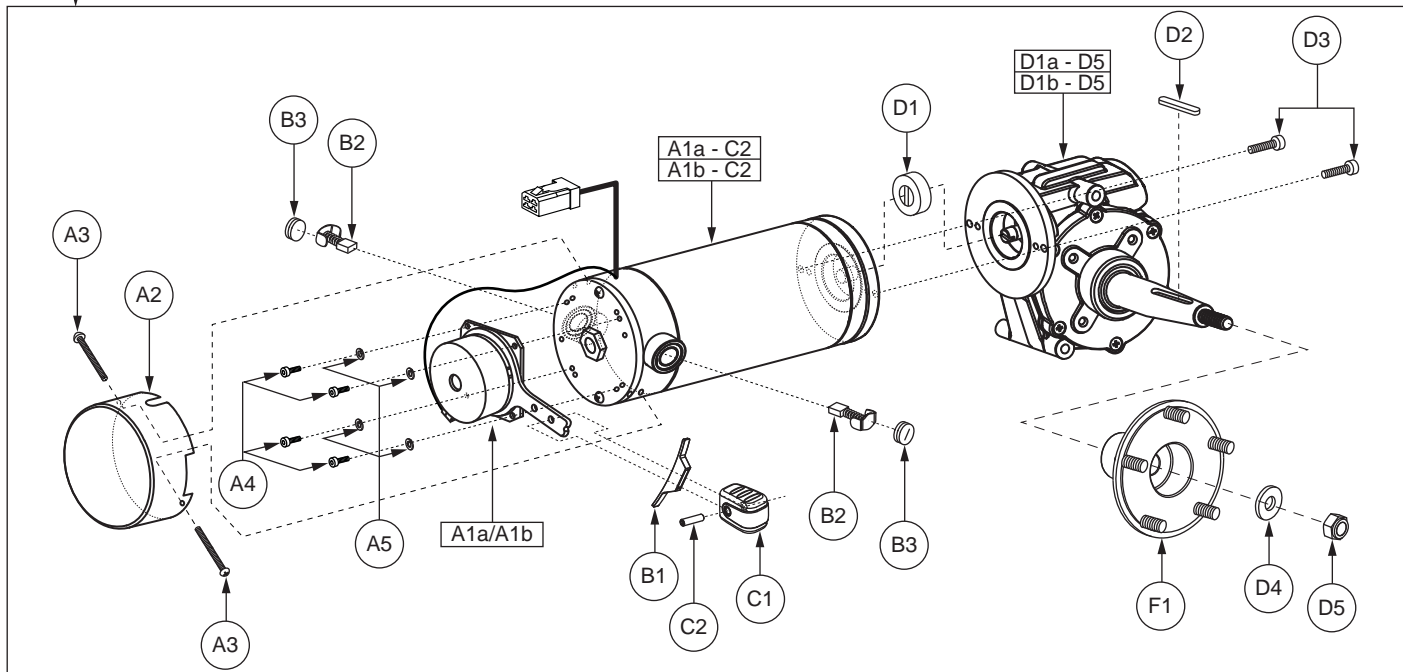
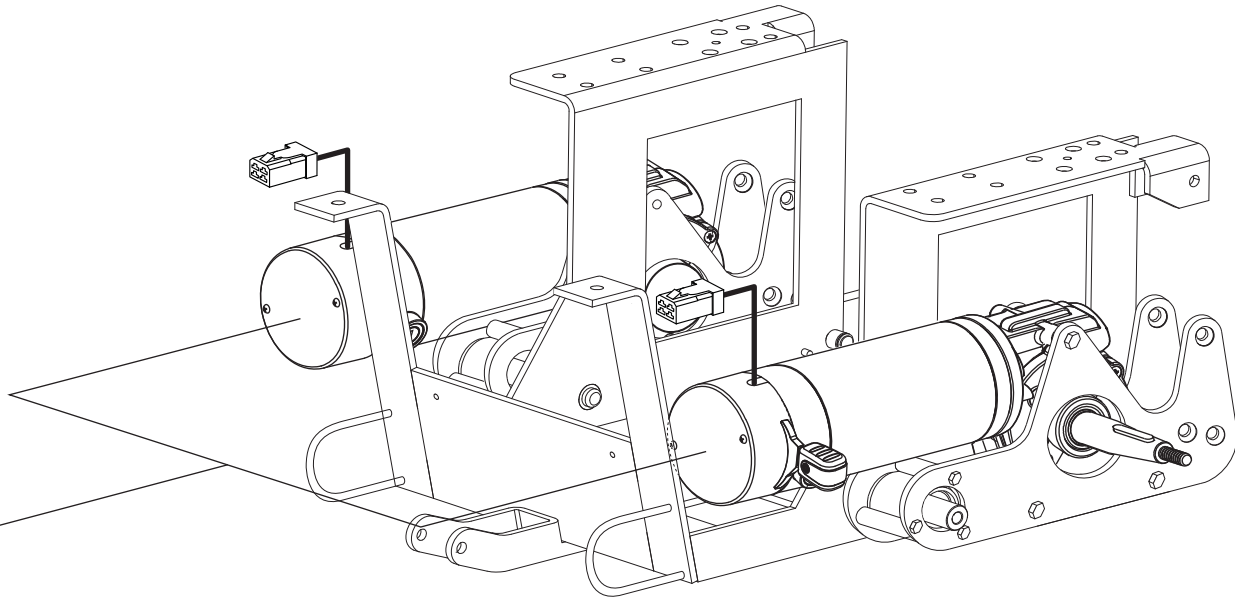
III. Suspension, Motor Mount, and Anti-tip Assembly

REF #	PART #	DESCRIPTION	QTY	MSRP (AU\$)
A1a - A10	FRMASMB16132	MOTOR MOUNT,ASSY,W/HARDWARE,RIGHT,QUANTUM R40	1	N/A
A1b - A10	FRMASMB16131	MOTOR MOUNT,ASSY,W/HARDWARE,LEFT,QUANTUM R40	1	N/A
A1a	FRMINDV1470	FRAME,MOTOR MOUNT,RIGHT INNER,(ANI: PD16D-P-028-C-R)	1	N/A
A1b	FRMINDV1468	FRAME,MOTOR MOUNT,LEFT INNER,(ANI: PD16D-P-028-C-L)	1	N/A
A2a	FRMINDV1471	FRAME,MOTOR MOUNT,RIGHT OUTER,(ANI: PD16D-P-027-C-R)	1	N/A
A2b	FRMINDV1469	FRAME,MOTOR MOUNT,LEFT OUTER,(ANI: PD16D-P-027-C-L)	1	N/A
A3	SCRHHCS1675	SCREW,HHCS,BLACK ZINC,M6-1.0 X 58MM	3	N/A
A4	WASMETR1036	WASHER,FLAT,BLACK ZINC,6.35MM ID X 13MM OD X 1MM TH,METRIC	6	5.36
A5	FRMINDV1463	FRAME,WELDMENT,MOTOR PIVOT SPACER,BLACK,(ANI: PG16D-A-012-T)	1	N/A
A6	BSHFLNG1075	BUSHING,FLANGE,BRONZE,18.00MM ID X 24.75MM OD X 49.00MM TH X 25.90MM FOD X 2.50MM FTH,B-1010-205	1	N/A
A7	SCRHHCS1676	SCREW,HHCS,ZINC,M6-1.0 X 15MM,W/NYLON PATCH	6	N/A
A8	SCRHHCS1190	SCREW,HHCS,ZINC,M8-1.25 X 20MM,GRADE 8.8	1	5.36
A9	WASLOCK1039	WASHER,LOCK,BLACK ZINC,M8,SPLIT	1	5.36
A10	WASMETR1142	WASHER,FLAT,BLACK ZINC,8.4MM ID X 26MM OD X 3MM TH	1	N/A
B1 - B7	FRMASMB16202	ANTI-TIP,ASSY,QUANTUMR40,PAIR	1	N/A
*B1a - B7	FRMASMB16203	ANTI-TIP,ASSY,W/HARDWARE,QUANTUMR40,RIGHT	1	N/A
*B1b - B7	FRMASMB16130	ANTI-TIP,ASSY,W/HARDWARE,QUANTUMR40,LEFT	1	N/A
B1	FRMINDV1461	ANTI-TIP,WELDMENT,LEFT,(ANI: DE16D-P-046-C)	1	N/A
B2	FRMINDV1462	ANTI-TIP,WELDMENT,RIGHT,(ANI: DE16D-P-019-C)	1	N/A
B3	SCRSHFH1170	SCREW,SHFH,BLACK ZINC,M8-1.25 X 25MM,W/NYLON PATCH	4	N/A
B4	WASMETR1143	WASHER,FLAT,BLACK ZINC,8.4MM ID X 14MM OD X 1MM TH	4	N/A
B5	NUTNYLK1011	NUT,NYLOCK,BLACK ZINC,M8-1.25	4	5.36
B6	WHLATIP1013	WHEEL,ANTI-TIP,BLACK RIM/GRAY TIRE,3",(ANI: UG500S-P-191-C)	1	N/A
B7	SCRSHFH1174	SCREW,SHFH,BLACK ZINC,M8-1.25 X 45MM,W/NYLON PATCH	1	N/A
C1 - C8	FRMASMB16112	SUSPENSION,ASSY,STRUT,REAR,QUANTUMR40	2	N/A
C1	FRMASMB16096	STRUT WELDMENT,W/BUSHINGS & BLACK SPRING,250 LBS/IN,(ANI: DE16D-P-018-C)	1	N/A
C2	SCRSHFH1172	SCREW,SHFH,BLACK ZINC,M8-1.25 X 60MM,W/NYLON PATCH	1	N/A
C3	WASNLYN1166	WASHER,WHITE,NYLON,11.5MM ID X 18MM OD X 5MM TH	4	N/A
C4	SPCINDV1003	SPACER,BLACK,ALUMINUM,8MM ID X 17MM OD X 16MM TH	1	N/A
C5	WASMETR1144	WASHER,FLAT,BLACK ZINC,8.4MM ID X 17MM OD X 7MM TH	1	N/A
C6	SCRASBH1283	SCREW,BHSCS,BLACK ZINC,M8-1.25 X 45MM,W/NYLON PATCH	1	N/A
C7	NUTNYLK1011	NUT,NYLOCK,BLACK ZINC,M8-1.25	1	5.36
C8	WASMETR1143	WASHER,FLAT,BLACK ZINC,8.4MM ID X 14MM OD X 1MM TH	1	N/A

Notes :

Top-level assemblies will include components designated with corresponding lowercase letters. Parts without lower-case extensions will be included in all top-level assemblies.

- *B1a - B7 Both assemblies contain identical parts. There are right and left sides for assembly purposes.
- *B1b - B7 Both assemblies contain identical parts. There are right and left sides for assembly purposes.



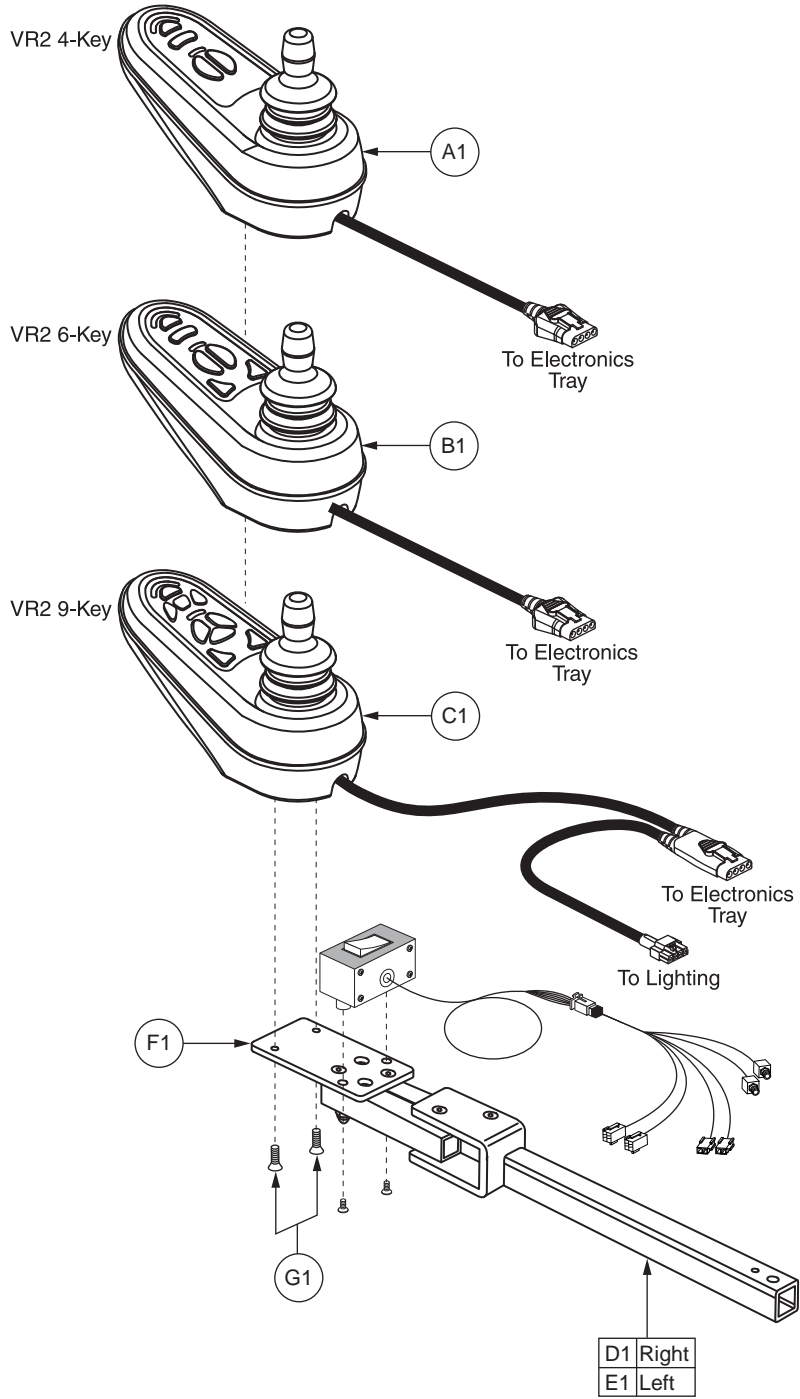
IV. Drive Assembly

REF #	PART #	DESCRIPTION	QTY	MSRP (AU\$)
A1 - G1	DRVASMB2260	MOTOR,ASSY,DRIVE,10KMH,450W,TAPERED SHAFT,W/GEARBOX & INDIVIDUAL BRAKE RELEASE,PAIR,QUANTUM R40	1	N/A
A1a - G1a	DRVASMB2255	MOTOR,ASSY,DRIVE,10KMH,450W,TAPERED SHAFT,INDIVIDUAL BRAKE LEVER,W/HUB & MOTOR MOUNT,RIGHT,QUANTUM R40,VR2	1	N/A
A1b - G1b	DRVASMB2254	MOTOR,ASSY,DRIVE,10KMH,450W,TAPERED SHAFT,INDIVIDUAL BRAKE LEVER,W/HUB & MOTOR MOUNT,LEFT,QUANTUM R40,VR2	1	N/A
A1a - E1a	DRVASMB2239	MOTOR,ASSY,DRIVE,10KMH,450W,TAPERED SHAFT,W/GEARBOX,INDIVIDUAL BRAKE RELEASE,RIGHT,VR2 CONNECTOR,H-1210-068,(CTE: 07TPR0005)	1	N/A
A1b - E1b	DRVASMB2238	MOTOR,ASSY,DRIVE,10KMH,450W,TAPERED SHAFT,W/GEARBOX,INDIVIDUAL BRAKE RELEASE,LEFT,VR2 CONNECTOR,H-1210-067,(CTE: 07TPR0006)	1	N/A
A1a - C2	DRVMOTR1458	MOTOR,DRIVE,10KMH,450W,W/BRAKE,RIGHT,VR2,H-1210-060,(CTE: 08TPR0005)	1	N/A
A1b - C2	DRVMOTR1457	MOTOR,DRIVE,10KMH,450W,W/BRAKE,LEFT,VR2,H-1210-059,(CTE: 08TPR0006)	1	N/A
A1a - A5	DRVASMB2343	MOTOR,ASSY,BRAKE,INDIVIDUAL RELEASE,RIGHT,QUANTUM R40	1	N/A
A1b - A5	DRVASMB2249	MOTOR,ASSY,BRAKE,INDIVIDUAL RELEASE,LEFT,QUANTUM R40	1	N/A
A1a	DRV1068	BRAKE,ASSY,24VDC,9.2W,LEFT,(ELECTROCRAFT: 0002-9426)	1	873.3
A1b	DRV1069	BRAKE,ASSY,24VDC,9.2W,RIGHT,(ELECTROCRAFT: 0002-9425)	1	873.3
A2	INDPART2839	CAP,MOTOR,BRAKE,BLACK,INDIVIDUAL RELEASE,(CTE: 107960002)	1	N/A
A3	SCRCPH1003	SCREW,CPH,BLACK ZINC,M4-.7 X 6MM	2	N/A
A4	SCRSHCS1309	SCREW,SHCS,ZINC,M4-.7 X 10MM	4	N/A
A5	WASLOCK1086	WASHER,LOCK,SPLIT,ZINC,M4	4	N/A
B1	DWR1215D001	LEVER,BRAKE SLOT SHIELD,D-1215-001	1	N/A
B2	DRVBRSH1038	MOTOR,BRUSH,450W,(CTE:212440201)	2	N/A
B3	PLSINDV1287	BRUSH CAP,MOTOR,450W,(CTE: 212400201)	2	N/A
C1 - C2	FRMASMB8691	FREEWHEEL,ASSY,RELEASE HANDLE GRIP,YELLOW,B-1160-051	1	10.71
C1	DWR1160C017	HANDLE,GRIP,YELLOW,C-1160-017	1	5.36
C2	SCRSETS1099	SCREW,SET,BLACK ZINC,M4-.7 X 16MM	1	5.36
*D1a - D5	DRVASMB2183	MOTOR,ASSY,GEARBOX,TAPERED 70MM SHAFT,RIGHT,25:1 GEAR RATIO,H-1210-018,(CTE: 02TPR7001)	1	N/A
*D1b - D5	DRVASMB2182	MOTOR,ASSY,GEARBOX,TAPERED 70MM SHAFT,LEFT,25:1 GEAR RATIO,H-1210-015,(CTE: 02TPR7002)	1	N/A
D1	INDPART2840	MOTOR COUPLER,(CTE: 107700003)	1	N/A
D2	KEYSTL1025	AXLE KEY,STEEL,3/16" X 3/16" X 29MM,(CTE: 204123010)	1	N/A
D3	SCRSHCS1048	SCREW,SHCS,ZINC,M6-1.0 X 20MM	2	5.36
D4	WASSTND1148	WASHER,FLAT,ZINC,12.80MM ID X 27.80MM OD X 2.00MM TH	1	N/A
D5	NUTNYLK1022	NUT,NYLOCK,ZINC,M12-1.5	1	5.36
*E1a	DWR1235L635	DECAL,MOTOR PART NUMBER BAR CODE,DRVASMB2239,RIGHT,L-1235-635	1	N/A
*E1b	DWR1235L634	DECAL,MOTOR PART NUMBER BAR CODE,DRVASMB2238,LEFT,L-1235-634	1	N/A
F1	DWR9762C081	WHEEL,HUB,REAR,TAPERED,PNEUMATIC,SC714,C-9762-081	1	6.42
*G1a	FRMASMB16132	MOTOR MOUNT,ASSY,W/HARDWARE,RIGHT,QUANTUMR40	1	N/A
*G1b	FRMASMB16131	MOTOR MOUNT,ASSY,W/HARDWARE,LEFT,QUANTUMR40	1	N/A

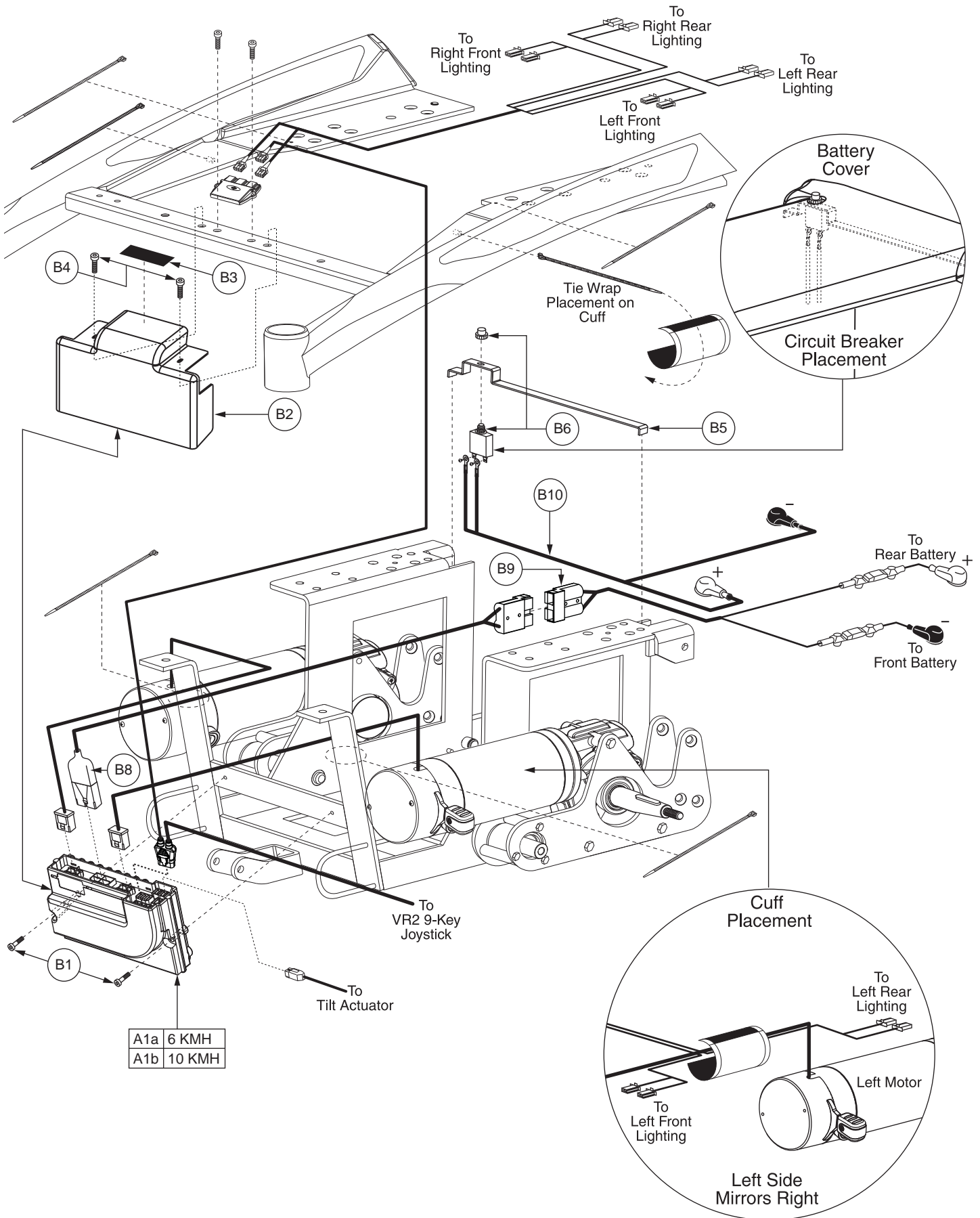
Notes :

Top-level assemblies will include components designated with corresponding lower-case letters. Parts without lower-case extensions will be included in all top-level assemblies.

- *D1a - D5** Both assemblies contain identical parts. There are left and right sides for assembly purposes.
- *D1b - D5** Both assemblies contain identical parts. There are left and right sides for assembly purposes.
- *E1a** Not shown.
- *E1b** Not shown.
- *G1a** Refer to SECTION III. Suspension, Motor Mount, and Anti-tip Assembly for the illustration and parts list.
- *G1b** Refer to SECTION III. Suspension, Motor Mount, and Anti-tip Assembly for the illustration and parts list.



REF #	PART #	DESCRIPTION	QTY	MSRP (AU\$) ¹¹ⁱ
A1	CTLDC1463	CONTROLLER,JOYSTICK MODULE,4 KEY,VR2,H-1111-015,(P&G: D50677)	1	771.12
B1	CTLDC1498	CONTROLLER,JOYSTICK MODULE,6 KEY,VR2,H-1111-063,(P&G: D50680)	1	796.82
C1	CTLDC1505	CONTROLLER,JOYSTICK MODULE,9 KEY,ACTUATORS & LIGHTS,VR2,H-1010-130,(P&G: D50871)	1	938.2
D1	FRMASMB16152	SWING AWAY JOYSTICK MOUNT,ASSY,QUANTUMR40 BRACKET,DOUBLE LINK,INLINE,RIGHT	1	N/A
E1	FRMASMB16151	SWING AWAY JOYSTICK MOUNT,ASSY,QUANTUMR40 BRACKET,DOUBLE LINK,INLINE,LEFT	1	N/A
F1	BRKINDV1210	MOUNTING BRACKET,CONTROLLER MOUNTING PLATE,(ANI: PD16D-P-034-T)	1	N/A
G1	SCRPFH1081	SCREW,PFH,BLACK ZINC,M5-.8 X 22MM	2	N/A

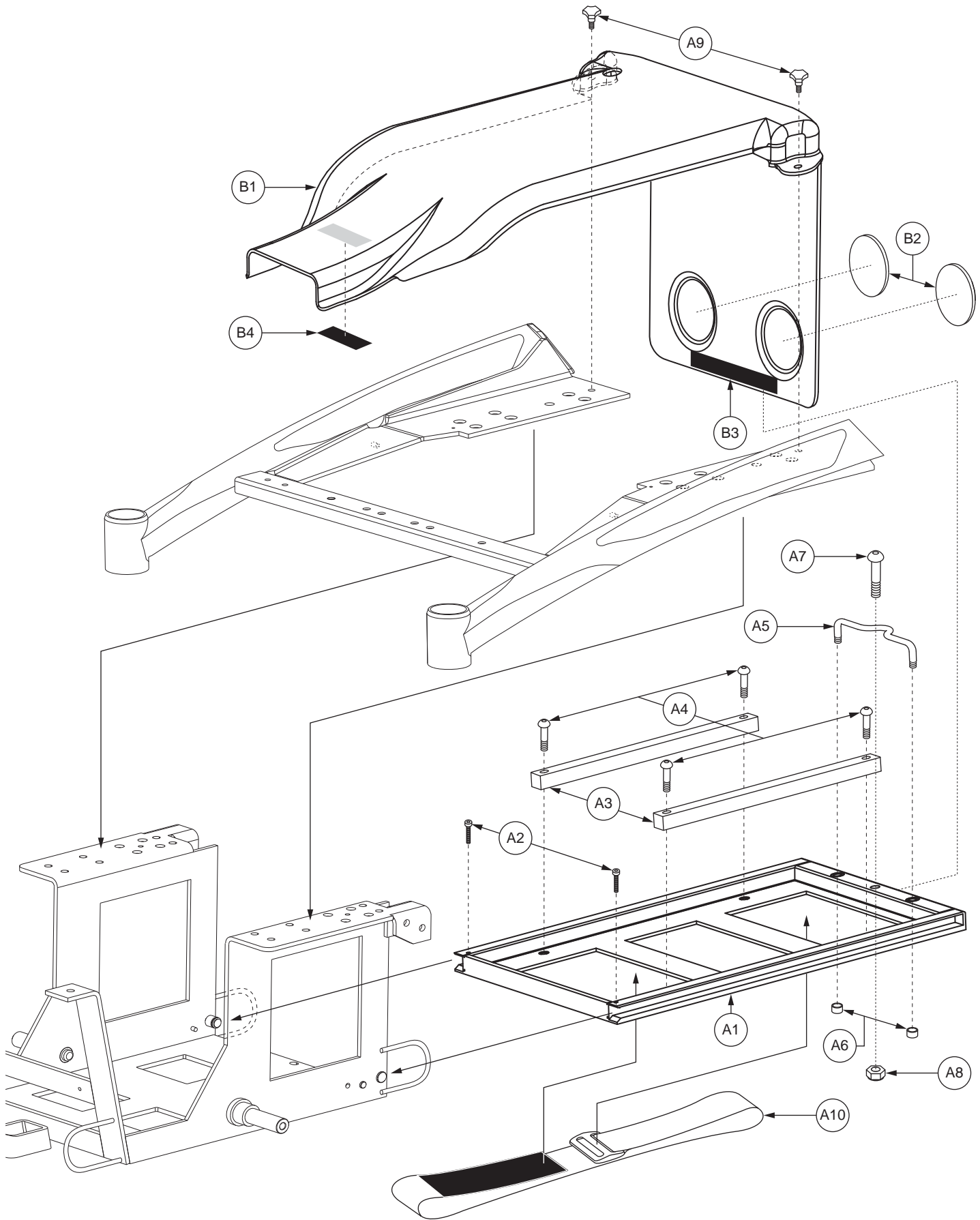


REF #	PART #	DESCRIPTION	QTY	MSRP (AU\$) ¹¹ⁱ
A1a - B11	ELEASMB7015	ELECTRONIC,ASSY,VR2,70 AMP,6KMH,350W MOTORS,QUANTUMR40,EURO,1 ACTUATOR	1	N/A
A1b - B11	ELEASMB7059	ELECTRONIC,ASSY,70 AMP,10KMH,450W MOTORS,QUANTUMR40,EURO,1 ACTUATOR	1	N/A
A1a	ELEASMB7012	CONTROLLER,VR2,ASSY,70 AMP,W/6KMH,350W PROGRAM,QUANTUMR40,1 ACTUATOR	1	N/A
A1b	ELEASMB7062	CONTROLLER,VR2,ASSY,70 AMP,W/10KMH,450W PROGRAM,QUANTUMR40,1 ACTUATOR	1	N/A
B1 - B11	ELEASMB7010	ELECTRONIC,ASSY,VR2,70 AMP,PARTIAL,QUANTUMR40	1	N/A
B1	SCRSHCS1314	SCREW,SHCS,ZINC,M4-.7 X 30MM,GRADE 8.8	2	N/A
B2	PLSINDV1288	SHROUD,BLACK,POWER MODULE COVER,(ANI: PD16D-P-014-C)	1	N/A
B3	VELLOOP1070	REUSABLE FASTENER,LOOP,75MM X 32MM,W/ADHESIVE BACK	1	N/A
B4	SCRSHCS1315	SCREW,SHCS,ZINC,M4-.7 X 12MM,GRADE 8	2	N/A
B5	BRKINDV1215	MOUNTING BRACKET,CIRCUIT BREAKER,(ANI: PD16D-A-010-T)	1	N/A
B6	ELEASMB7000	ELECTRONIC,ASSY,CIRCUIT BREAKER,50 AMP,STRAIGHT TERMINALS,W/PROTECTIVE COVER,(ANI: DE16S-P-116-C)	1	N/A
*B7	VELSGAD1013	REUSABLE FASTENER,7.75"L X 4"W,HOOK & LOOP, CUFF,(ANI: OS16D-P-030-C)	2	N/A
B8	DWR1056H023	ELECTRONIC,HARNESS,POWER CABLE,VR2,JET3ULTRA/600 SERIES,H-1056-023	1	127.86
B9	DWR1054H003	ELECTRONIC,HARNESS,BATTERY CABLE, W/125A/32V FUSEABLE LINKS,H-1054-003	1	203.49
B10	DWR1054H001	ELECTRONIC,HARNESS,POSITIVE BATTERY TERMINAL TO CIRCUIT BREAKER JUMPER,H-1054-001	1	23.15
*B11	DWR1010H128	ELECTRONIC,HARNESS,VR2 EXTENSION CABLE,H-1010-128,(P&G: SA77974)	1	38.56

Notes :

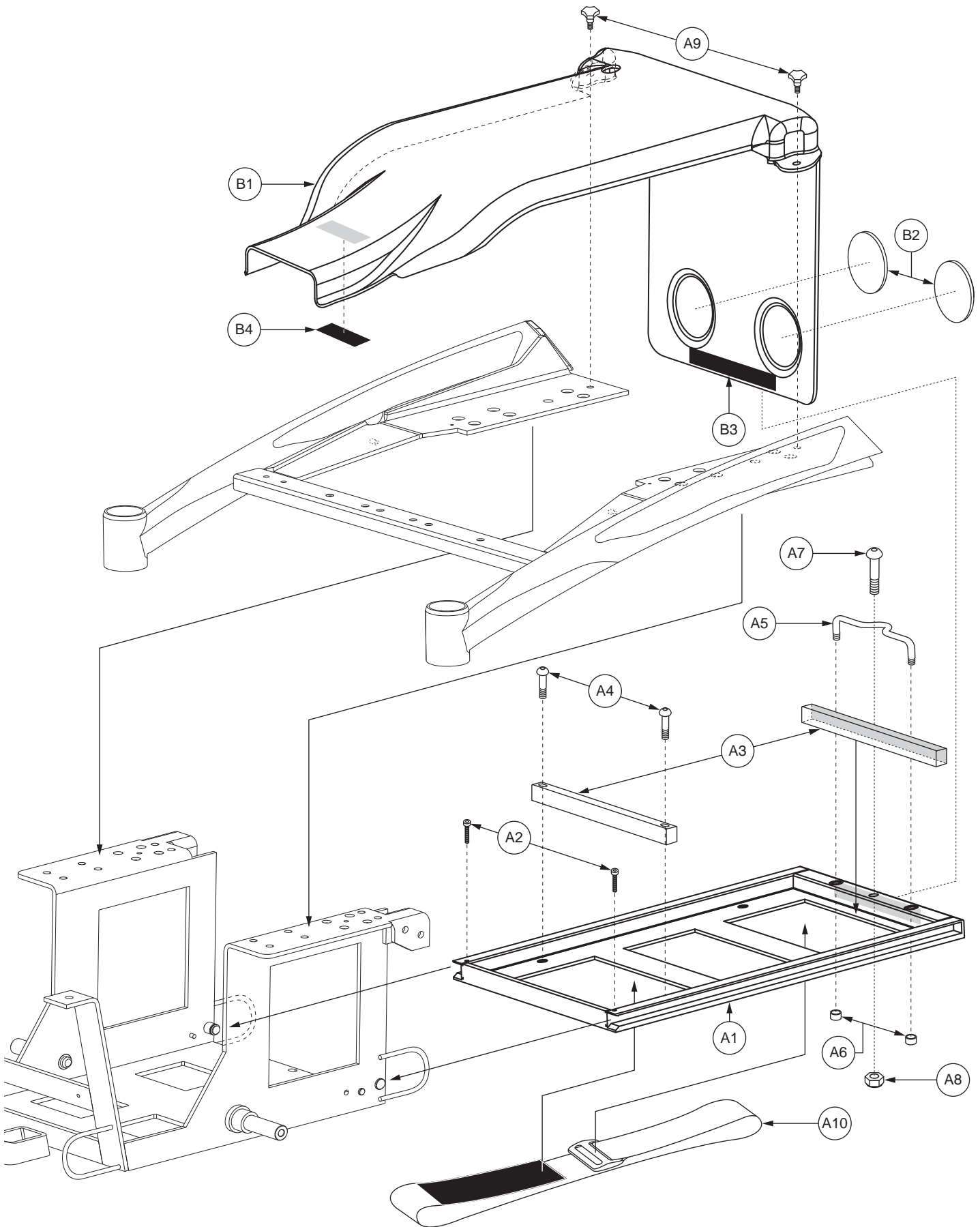
Top-level assemblies will include components designated with corresponding lower-case letters. Parts without lower-case letters will be included in all top-level assemblies.

*B7 Not shown.
 *B11 Not shown.



VII. Battery Tray Assembly — 40Ah

REF #	PART #	DESCRIPTION	QTY	MSRP (AU\$)
A1 - B4	FRMASMB16109	FRAME,ASSY,BATTERY TRAY,40AH BATTERIES,QUANTUMR40	1	N/A
A1	FRMINDV1458	FRAME,WELDMENT,BATTERY TRAY,BLACK,(ANI: PD16D-A-009-T)	1	N/A
A2	SCRSHCS1310	SCREW,SHCS,BLACK ZINC,M4-.7 X 24MM,GRADE 8	2	N/A
A3	PLSINDV1281	BATTERY SPACER,WHITE,NYLON,SIDE,9.0"L X 0.75"H X 0.50"W,(ANI: PD16D-P-066-T)	2	N/A
A4	SCRASBH1281	SCREW,BHSCS,BLACK ZINC,M6-1.0 X 25MM,CUSTOM,(ANI: DA16S-P-058-C)	4	N/A
A5	FRMINDV1459	FRAME,BATTERY TRAY HANDLE,BLACK,M6-1.0,THREADED,(ANI: PD16D-P-029-C)	1	N/A
A6	HDWINDV1202	BATTERY HANDLE CAP,ZINC,THREADED,(ANI: OS16D-P-200-C)	2	N/A
A7	SCRASBH1282	SCREW,BHSCS,BLACK ZINC,BLACK ZINC,M8-1.25 X 42MM	1	5.36
A8	NUTNYLK1011	NUT,NYLOCK,BLACK ZINC,M8-1.25	1	5.36
A9	PLSKNCP1064	KNOB,BLACK,M6-1.0 X 12MM,(ANI: KA16S-P-049-C)	2	N/A
A10	ACCSTRP1069	BATTERY STRAP,BLACK,46.0CM L X 2" W,W/VELCRO LOOP & D RING,(ANI: PD16D-P-129-T)	1	N/A
B1 - B4	SHDASMB6070	SHROUD,ASSY,BATTERY COVER,W/REFLECTORS & VELCRO	1	128.52
B1	SHDRAWM2331	SHROUD,BATTERY COVER,BLACK,(ANI: PD16D-P-015-C)	1	N/A
B2	REFRED1011	REFLECTOR,RED,2" ROUND,HELLA,E-MARK,SELF-ADHESIVE,(ANI: PD16D-P-074-T)	2	N/A
B3	VELSGAD1011	REUSABLE FASTENER,HOOK & LOOP,110MM X 20MM,W/ADHESIVE BACK,SET	1	N/A
B4	VELMUSH1018	REUSABLE FASTENER,DUAL LOCK,75MM X 30MM,W/ADHESIVE BACK,SET	1	N/A

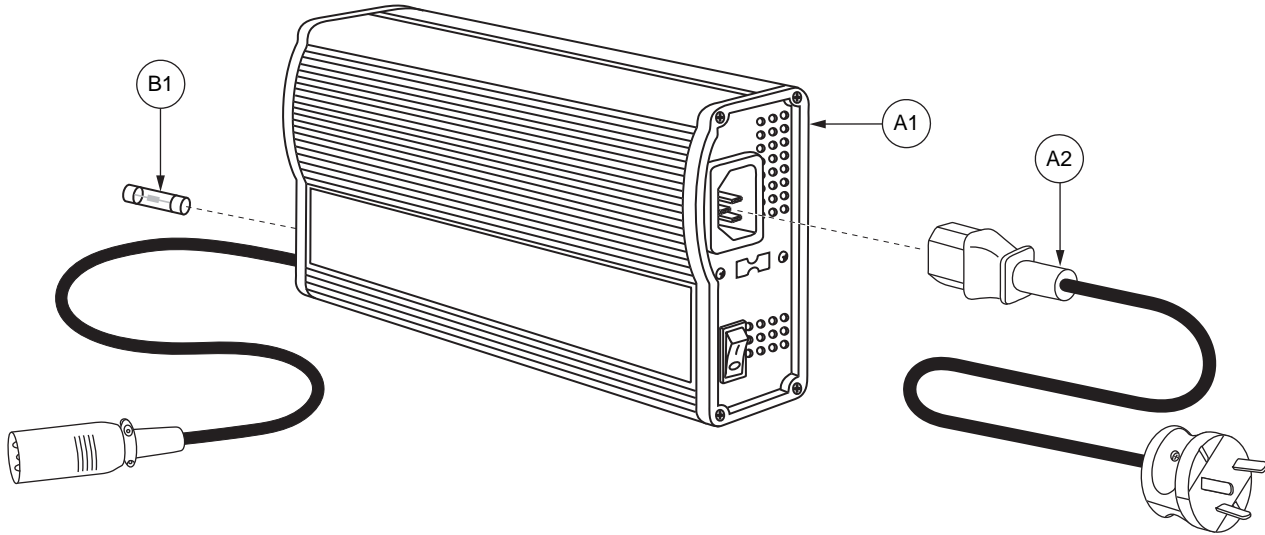


VII. Battery Tray Assembly — NF-22

REF #	PART #	DESCRIPTION	QTY	MSRP (AU\$) ¹¹ⁱ
A1 - B4	FRMASMB16110	FRAME,ASSY,BATTERY TRAY,QUANTUMR40	1	314.88
A1	FRMINDV1458	FRAME,WELDMENT,BATTERY TRAY,BLACK,(ANI: PD16D-A-009-T)	1	N/A
A2	SCRSHCS1310	SCREW,SHCS,BLACK ZINC,M4-.7 X 24MM,GRADE 8	2	N/A
A3	PLSINDV1281	BATTERY SPACER,WHITE,NYLON,SIDE,9.0"L X 0.75"H X 0.50"W,(ANI: PD16D-P-066-T)	2	N/A
*A4	SCRASBH1281	SCREW,BHSCS,BLACK ZINC,M6-1.0 X 25MM,CUSTOM,(ANI: DA16S-P-058-C)	4	N/A
A5	FRMINDV1459	FRAME,BATTERY TRAY HANDLE,BLACK,M6-1.0,THREADED,(ANI: PD16D-P-029-C)	1	N/A
A6	HDWINDV1202	BATTERY HANDLE CAP,ZINC,THREADED,(ANI: OS16D-P-200-C)	2	N/A
A7	SCRASBH1282	SCREW,BHSCS,BLACK ZINC,M8-1.25 X 42MM	1	5.36
A8	NUTNYLK1011	NUT,NYLOCK,BLACK ZINC,M8-1.25	1	5.36
A9	PLSKNCP1064	KNOB,BLACK,M6-1.0 X 12MM,(ANI: KA16S-P-049-C)	2	N/A
A10	ACCSTRP1069	BATTERY STRAP,BLACK,46.0CM L X 2" W,W/VELCRO LOOP & D RING,(ANI: PD16D-P-129-T)	1	N/A
B1 - B4	SHDASMB6070	SHROUD,ASSY,BATTERY COVER,W/REFLECTORS & VELCRO	1	128.52
B1	SHDRAWM2331	SHROUD,BATTERY COVER,BLACK,(ANI: PD16D-P-015-C)	1	N/A
B2	REFRED1011	REFLECTOR,RED,2" ROUND,HELLA,E-MARK,SELF-ADHESIVE,(ANI: PD16D-P-074-T)	2	N/A
B3	VELSGAD1011	REUSABLE FASTENER,HOOK & LOOP,110MM X 20MM,W/ADHESIVE BACK,SET	1	N/A
B4	VELMUSH1018	REUSABLE FASTENER,DUAL LOCK,75MM X 30MM,W/ADHESIVE BACK,SET	1	N/A

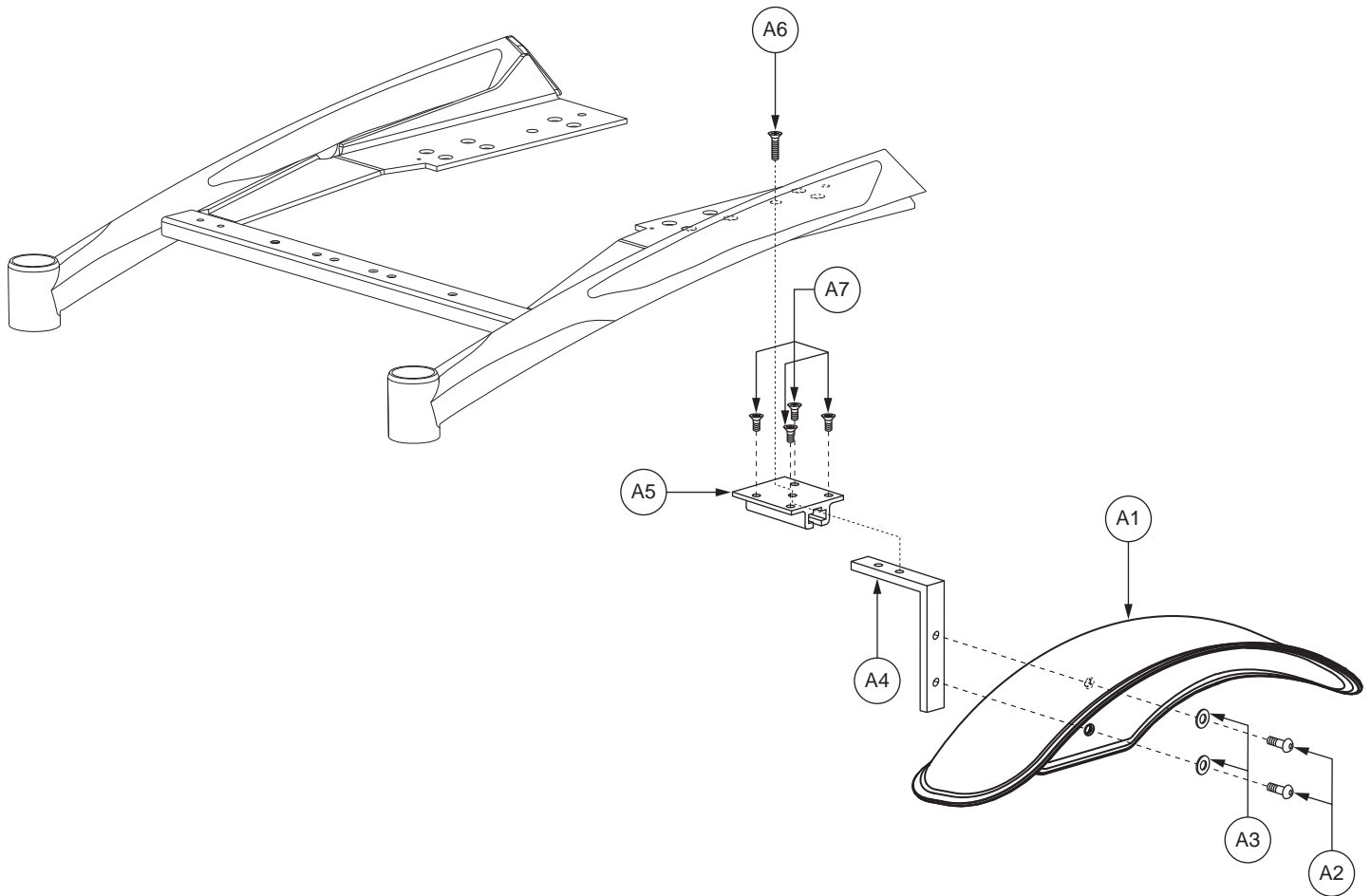
Notes :

*A4 Two shown.

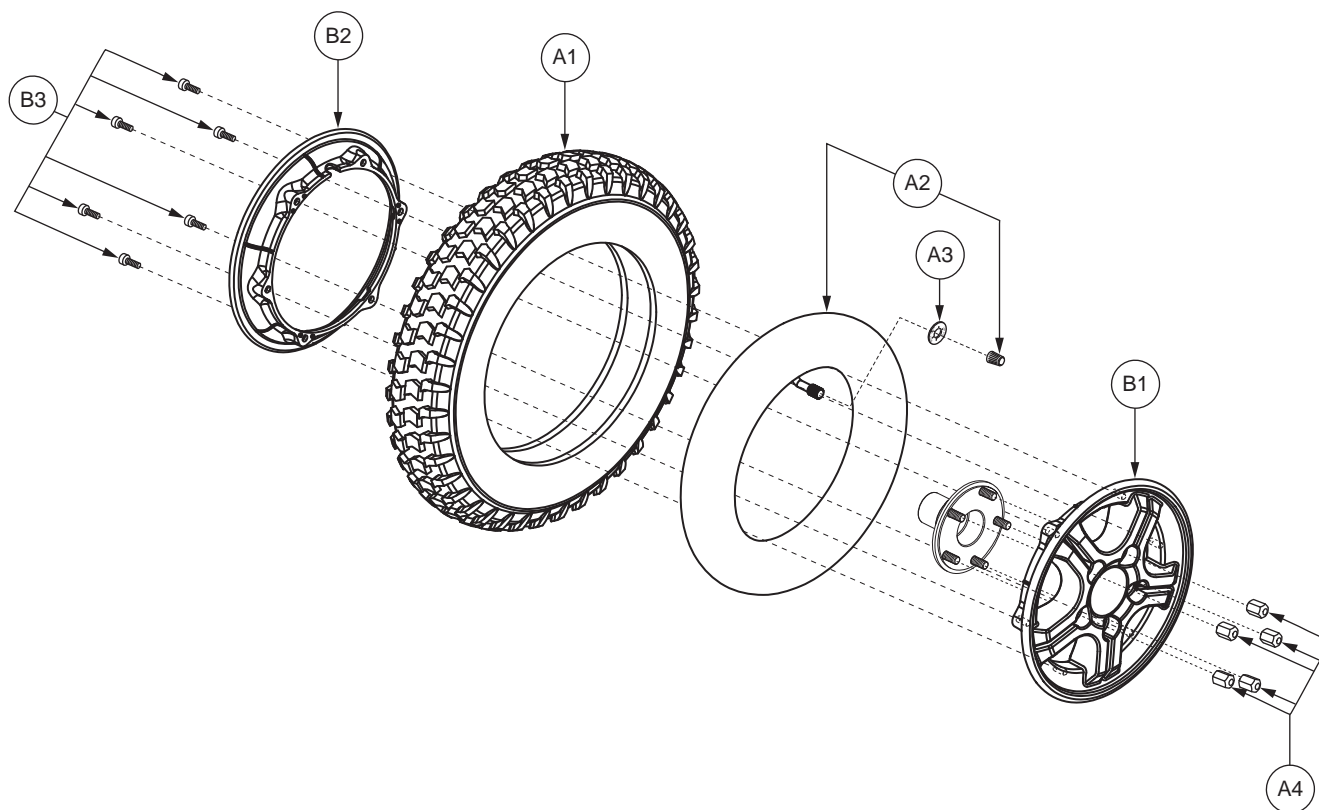


REF #	PART #	DESCRIPTION	QTY	MSRP (AU\$) ¹¹ⁱ
A1 - A2	ELEASMB5611	CHARGER, ASSY, OFFBOARD, 110V-230V, 5 AMP, W/AUS POWER CORD	1	N/A
A1	ELECHG1010	CHARGER, OFFBOARD, 110V-230V, 5 AMP, PRESET TO 230V, H-1010-114, (MTS:HP-8204B)	1	546.21
A2	DWR1000H174	ELECTRONIC, HARNESS, AC POWER CORD, INSULATED BLADES, AUSTRALIA, H-1000-174	1	42.84
B1	ELEFUSE1020	FUSE, FAST ACTING, 10AMP, 250V, 5MM OD X 20MM L, (MULTICOMP: 92N5130)	1	5.36

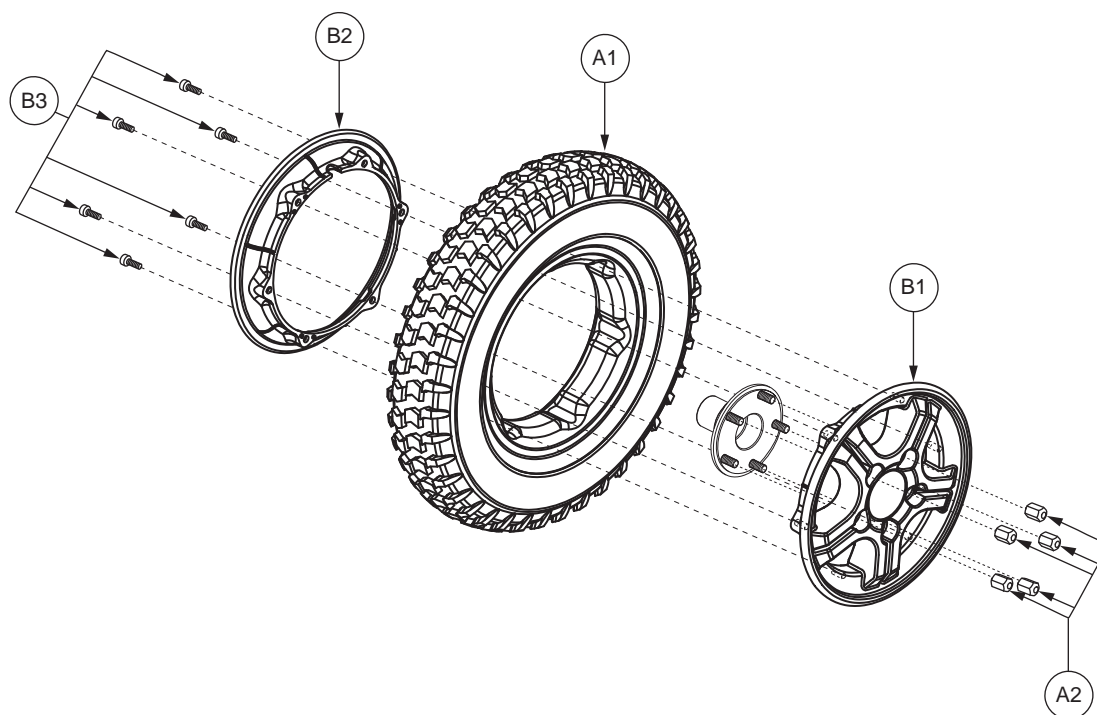
IX. Shroud Assembly



REF #	PART #	DESCRIPTION	QTY	MSRP (AU\$)
A1 - A7	SHDASMB5979	SHROUD,ASSY,FENDER,14" DRIVE WHEEL,QUANTUMR40	2	25.7
A1	SHDRAWM2332	SHROUD,FENDER,BLACK,14" DRIVE WHEEL,(ANI: OS16D-P-276-C)	1	N/A
A2	SCRASBH1284	SCREW,BHSCS,BLACK ZINC,M6-1.0 X 13MM,W/NYLON PATCH	2	N/A
A3	WASMETR1036	WASHER,FLAT,BLACK ZINC,6.35MM ID X 13MM OD X 1MM TH,METRIC	2	5.36
A4	BRKINDV1205	MOUNTING BRACKET WELDMENT,FENDER,BLACK,(ANI: PD16D-A-008-T)	1	N/A
A5	BRKINDV1206	MOUNTING BRACKET,FENDER,BLACK,SLIDING PLATE,(ANI: PD16D-P-057-T)	1	N/A
A6	SCRSHFH1169	SCREW,SHFH,BLACK ZINC,M5-.8 X 22MM	1	N/A
A7	SCRSHFH1110	SCREW,SHFH,BLACK ZINC,M5-.8 X 10MM	4	N/A



REF #	PART #	DESCRIPTION	QTY	MSRP (AU\$)
A1 - B3	WHLASMB1814	WHEEL,ASSY,PNEUMATIC,SILVER RIM/GRAY TIRE,14" X 3",5 SPOKE,C-248-5,W/LUGNUTS,E-1203-009	1	257.7
A1	TIRPNEU1004	TIRE,PNEUMATIC,GRAY,3.00-8 X 14",C-248-5	1	73.9
A2	TUBSTND1002	TUBE,300-8,ANGLED VALVE W/CAP	1	27.23
A3	DWR7700A010	SLIP COVER,VALVE STEM,35PSI,2.4 BAR,MAX RATING,A-7700-010	1	5.36
A4	DWR1005B049	NUT,LUG,ZINC,5/16-24,B-1005-049	5	5.36
B1 - B3	WHLASMB1812	WHEEL,ASSY,RIM,SILVER,8" ALUMINUM,5 SPOKE,MACHINED FACE,D-1203-014	1	184.31
B1	DWR1203E008B	WHEEL,RIM,SILVER,ALUMINUM,8",5 SPOKE,MACHINED FACED,OUTER,E-1203-008	1	80.73
B2	DWR1133E025B	WHEEL,RIM,SILVER,ALUMINUM,8",TRI-SPOKE,INNER,E-1133-025	1	71.45
B3	SCRALNH1037	SCREW,SHCS,M6-1.0 X 16MM	6	5.36



REF #	PART #	DESCRIPTION	QTY	MSRP (AU\$) ¹¹ⁱ
A1 - B3	WHLASMB1813	WHEEL,ASSY,FLAT FREE,SILVER RIM/GRAY TIRE,14" X 3",5 SPOKE,C-248-5,W/LUGNUTS,D-1203-015	1	397.39
A1	TIRSOL11075	TIRE,W/FLAT FREE INSERT,GRAY,3.00-8 X 14",5 SPOKE,PRIMO POWERTRAX,C-248,(GALLOP: 5508018 YT57)	1	243.68
A2	DWR1005B049	NUT,LUG,ZINC,5/16-24,B-1005-049	5	5.36
B1 - B3	WHLASMB1812	WHEEL,ASSY,RIM,SILVER,8" ALUMINUM,5 SPOKE,MACHINED FACE,D-1203-014	1	184.31
B1	DWR1203E008B	WHEEL,RIM,SILVER,ALUMINUM,8",5 SPOKE,MACHINED FACED,OUTER,E-1203-008	1	80.73
B2	DWR1133E025B	WHEEL,RIM,SILVER,ALUMINUM,8",TRI-SPOKE,INNER,E-1133-025	1	71.45
B3	SCRALNH1037	SCREW,SHCS,M6-1.0 X 16MM	6	5.36

XI. Owner's and Decal Packages

Owner's Package

REF #	PART #	DESCRIPTION	QTY	MSRP (AU\$) ¹¹ⁱ
*N/A	INDASMB1970	OWNER'S PACKAGE,ASSY,FUSION,AUSTRALIA	1	N/A
*N/A	INFMANU4006	MANUAL,OWNER'S,FUSION,AUSTRALIA	1	N/A
*N/A	INFINFB2490	MANUAL,PRODUCT SPECIFICATION SHEET,FUSION,AUSTRALIA	1	N/A
*N/A	INFINFB1137	MANUAL,OWNER'S,WARRANTY CARD,ENGLISH	1	N/A
*N/A	PROZBAG1003	BAG,10"L X 12"W X 2MM,ZIPLOCK	1	N/A
*N/A	PLSTIE1014	CABLE TIE,BLACK,NYLON,16"L	6	5.36
*N/A	DWR1235L519	HANG TAG,ROUND,GENERIC,COUNTRY OF ORIGIN,L-1235-519	1	N/A
*N/A	DWR1020L003	HANG TAG,FULLY RECHARGE BATTERY BEFORE INITIAL USE,6-1/4" X 3-3/8",L-1020-003	1	5.36
*N/A	INDASMB1860	MANUAL,ASSY,QUICK REFERENCE TAG,WITH LANYARD AND RING,UNOCCUPIED POWER CHAIR	1	N/A

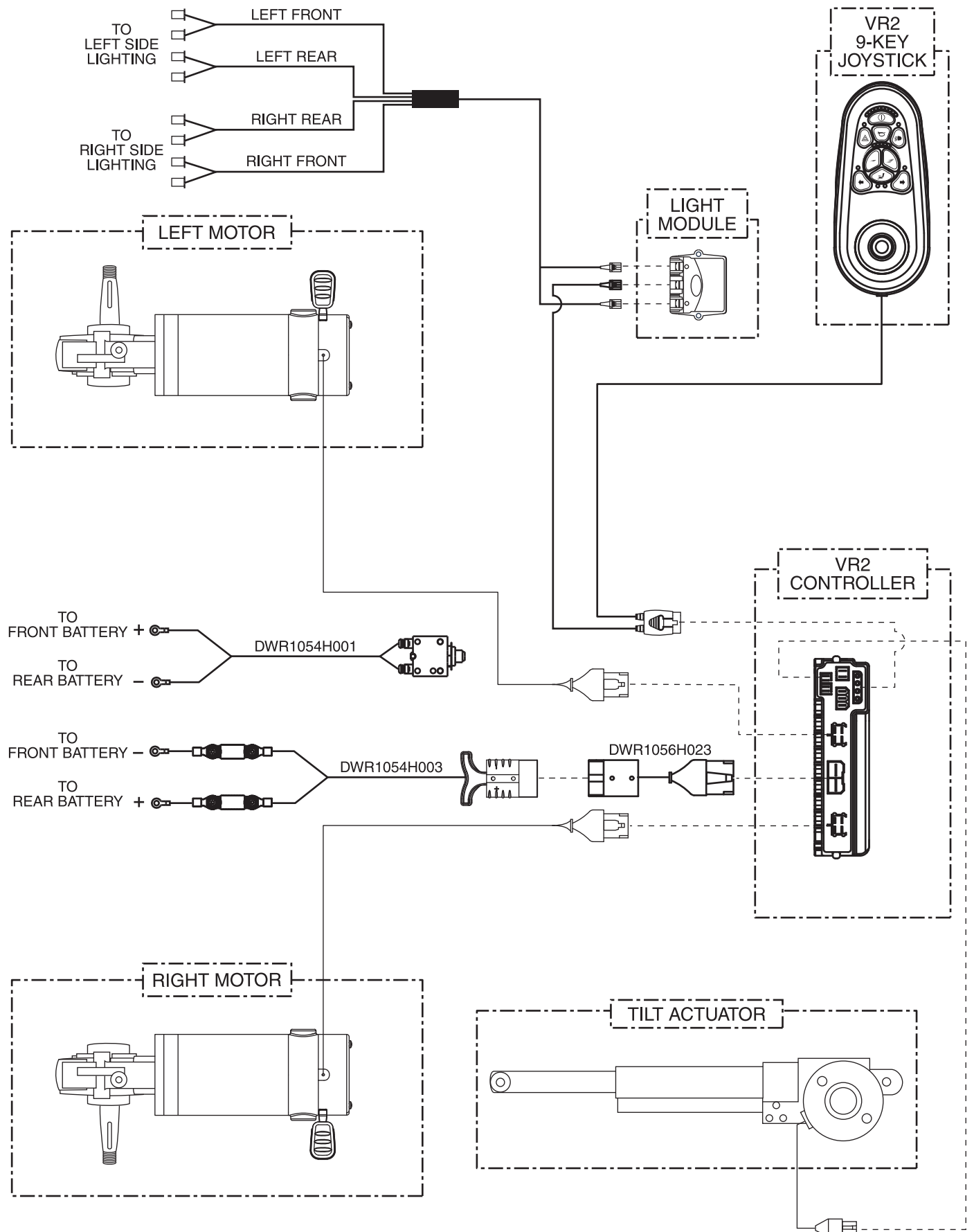
Decal Package

REF #	PART #	DESCRIPTION	QTY	MSRP (AU\$) ¹¹ⁱ
*N/A	DECASMB2254	DECAL,ASSY,FUSION,AUSTRALIA	1	N/A
*N/A	DECSERN1035	DECAL,SERIAL NUMBER,2" X 1.25",BARCODE, MADE IN CHINA, W/PRIDE LOGO	1	N/A
*N/A	DWR1121L003	DECAL,PRIDE MOBILITY PRODUCTS,WEBSITE,L-1121-003	1	16.07
*N/A	DWR1234L004	DECAL,ICON,300LBS/135 KG,MAXIMUM WEIGHT CAPACITY,L-1234-004	1	5.36
*N/A	DWR1234L091	DECAL,ICON,JAZZY FREEWHEEL,UP-DRIVE/DOWN-NEUTRAL,L-1234-091	2	5.36
*N/A	DWR1234L007	DECAL,ICON,DO NOT STAND/NOT A STEP,L-1234-007	1	5.36
*N/A	DWR1234L012	DECAL,ICON,1.5",READ OWNERS MANUAL,L-1234-012	1	5.36
*N/A	DWR1234L799	DECAL,ICON,1" X 2.5",WEATHER/MANUAL/LOOSE GARMENT,L-1234-799	1	5.36
*N/A	DWR1234L811	DECAL,ICON,DO NOT ADJUST ANTI-TIP,1.25" X 0.75",JAZZYSELECT,L-1234-811	2	5.36
*N/A	DWR1234L957	DECAL,WARNING,DEFLATE TIRE COMPLETELY,L-1234-957	2	5.36
*N/A	DWR1235L512	DECAL,WARNING,EMI-RFI,20V/M,L-1235-512	1	7.32
*N/A	DWR1235L515	DECAL,WARNING,BATTERY WARNINGS,L-1235-515	1	N/A
*N/A	DWR1235L520	DECAL,CAUTION,EXTENSION CORD/GROUNDING PRONG,L-1235-520	1	N/A
*N/A	DWR1235L521	DECAL,WARNING,CONTROLLER CORD PLACEMENT,L-1235-521	1	N/A
*N/A	DWR1235L655	DECAL,BATTERY CONNECTION,1.75" X 2.50",R40,L-1235-655	1	N/A
*N/A	DWR1235L661	DECAL,NAME,FUSION,BLUE,RIGHT,L-1235-661	1	6.42
*N/A	DWR1235L662	DECAL,NAME,FUSION,BLUE,LEFT,L-1235-662	1	6.42
*N/A	DWR1235L663	DECAL,NAME,FUSION,RED,RIGHT,L-1235-663	1	6.42
*N/A	DWR1235L664	DECAL,NAME,FUSION,RED,LEFT,L-1235-664	1	6.42
*N/A	DWR1235L665	DECAL,NAME,FUSION,YELLOW,RIGHT,L-1235-665	1	6.42
*N/A	DWR1235L666	DECAL,NAME,FUSION,YELLOW,LEFT,L-1235-666	1	6.42
*N/A	DWR1235L706	DECAL,DATA PLATE,R40,AUSTRALIA,L-1235-706	1	N/A
*N/A	DWR1235L116	DECAL,ICON,TIE DOWN HOOK,L-1235-116	4	N/A

Notes :

*N/A Not applicable.

A. Electrical System Diagram





Pride[®]

Mobility Products Corp.

www.pridemobility.com

Pride[®] Mobility Products Corporation

182 Susquehanna Avenue
Exeter, PA 18643
USA

Pride[®] Mobility Products Company

380 Vansickle Road, Unit 350
St. Catharines, Ontario L2R 6P7
Canada

Pride[®] Mobility Products Ltd.

32 Wedgwood Road
Bicester, Oxon OX26 4UL
UK

Pride[®] Mobility Products Australia Pty. Ltd.

21 Healey Road
Dandenong, 3175
Victoria, Australia

Pride[®] Mobility Products Italia S.r.l.

Via del Porgresso - ang. Via del Lavoro
Loc. Prato della Corte
00065 - Fiano Romano (RM)

Pride[®] Mobility Products Europe B.V.

Castricummer Werf 26
1901 RW Castricum
The Netherlands