

Power wheelchair for children *Skippi* 490E55=00000_K Order form.

Customer

Cust. no.

Name

Street no.

PC, city

Shipping address (if different from customer address)

Name

Street no.

PC, city

Com.

Name _____ Date _____ Signature _____

Quotation

Order

Attachment for custom fabrication enclosed



By placing the order, you agree to comply with the instructions for use/service manuals for accessories and products of other manufacturers when combining them with an Ottobock product, in addition to the instructions for use/service manuals of the respective Ottobock products. Also you confirm to have read, understood and accepted, our general terms and conditions. In addition, you agree, upon placing an order, to conduct your own conformity assessment or approval in accordance with national requirements if and when you implement modifications or attachments that do not meet the specifications of Ottobock instructions for use/service manuals.

Article number: 490E55=00000_K Standard equipment

- VR2 joystick modul
- 6 km/h
- 28,75Ah (C5) / 35Ah C20) gel batteries
- Battery charger
- 8" PU caster wheels
- Standard seat with back bag
- Seat cushion
- Telescoping side panels
- Individual telescoping leg supports
- Wheel cover for drive wheels
- Drive wheels with aluminium rim, black
- Lap belt with buckle

max. load capacity: 50 kg

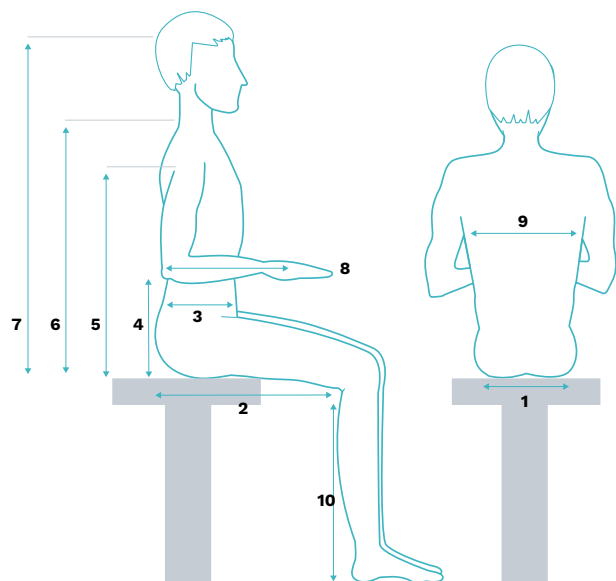
The number codes contained in this order form are not intended to be used as article numbers for spare parts orders.
Please use the spare parts catalogue for spare parts orders.

Power wheelchair for children *Skippi* 490E55=00000_K Order form.

Basic data (voluntary information)

Gender male female divers

Indication



Mandatory information*

User height [cm]

User weight [kg]

1 Seat width [cm]

2 Seat depth [cm]

3 Trunk depth [cm]

4 Arm support height [cm]

5 Armpit height [cm]

6 Shoulder height [cm]

7 Head height [cm]

8 Forearm length to middle of palm

9 Trunk width [cm]

10 Lower leg length [cm]

* This information will help to support user-oriented settings and product development. Ottobock guarantees the confidential and purely internal use of these data.

Settings for Standard seat

(SW 30 ... 38 cm, SD 28 ... 38 cm)

Back support angle	mechanical -9/1/11/21°		mechanical 0/10/20/30°			
Not possible with electrical back support angle adjustment!						

Seat depth SD in cm	30	31	32	33	34	35
	36	37	38	47	48	
with removable lateral pads	24	25	26	27	28	29
Seat width SW in cm	28	30	32	34	36	38

Lower leg length LLL	cm (15 ... 38 cm) without seat cushion					
-----------------------------	---	--	--	--	--	--

Push handles

ED10	Height-adjustable, detachable	Add. charge
------	--------------------------------------	-------------

Seat tilt

EC51	Mechanical, continuous, range 20° see exclusions 8.1)	Add. charge
EC50	Electrical, continuous, range 20°	Add. charge

Seat height adjustment

EC57	Electrical, continuous, range Bereich 20 cm / 7.9" see exclusions 9.1) and 9.2)	Add. charge
------	--	-------------

Back support height adjustment

ED50	Electrical, continuous, range 25° see exclusions 10.1) and 10.2)	Add. charge
------	---	-------------

Power wheelchair for children *Skippi* 490E55=0000_K Order form.

Seating system accessories

EE30	Mounting accessories for head support see exclusions 11.1)	Add. charge
EP65	Lap belt with buckle	-
EE37	Lateral pads, detachable, for side panel (pair, thickness 3 cm / 1.2") see exclusions 11.1)	Add. charge
ED11	Back support extension (35 cm / 13.8" – 45 cm / 18.1") see exclusions 11.1)	Add. charge

Information on head supports, lap belts and other accessories can be found in the accessory catalogue.

Leg supports

EB02	Individual with aluminium foot plates (standard equipment, LLL 23 ... 38 cm) see exclusions 12.1) and 12.4)	-
EB05	Single-panel with aluminium foot plate (LLL 23 ... 38 cm) see exclusions 12.1) and 12.4)	Add. charge
EB06	Individual with aluminium foot plate for short LLL (LLL 15 ... 22 cm) see exclusions 12.1) and 12.4)	Add. charge
EB16	Single-panel with aluminium foot plate for short LLL (LLL 15 ... 22 cm) see exclusions 12.1) and 12.4)	Add. charge
EB20	Mechanically elevating (LLL 15 ... 33 cm) see exclusions 2.1) and 12.4)	Add. charge
EB07	Without leg supports see exclusions 12.5)	Reduced

Information on foot positioning can be found in the accessory catalogue.

Frame colour

014	Candy red	-
016	Silver metallic	-
023	White RAL 9016	-
048	Obsidian black (texture)	-
049	Granite metallic (texture)	-
050	Aubergine (texture)	-
051	Sunny orange (texture)	-
052	Rich lime (texture)	-
053	Kordia cherry (texture)	-
054	Pebblestone Grey (texture)	-
055	Blueberry (texture)	-

Tyres

EF10	Puncture-proof 8" PU caster wheels, drive wheels 12 1/2" pneumatic, black aluminium rims (standard equipment)	-
EG06	Puncture-proof tyres for all wheels	Add. charge

Battery charger

EU91	Battery charger (standard equipment)	-
EU02	Battery charger without fan (low-noise) see exclusions 28.1) and 28.2)	Add. charge

Control panel

EU85	Control panel standard (standard equipment)	-
EU06	Mid-tray control (MTC), right (manual flip over)	Add. charge
EU06	Mid-tray control (MTC), left (manual flip over)	Add. charge

Power wheelchair for children *Skippi* 490E55=0000_K Order form.

Control panel holder

EU19	Standard (standard equipment)	-
EU20	Swing-away in parallel	Add. charge

Control panel holder mounting side see exclusions 16.1) and 16.2)

	Right	
	Left	

Control device accessories

EU15	Attendant control (height-adjustable, removable push handles required) see exclusions 8.1)	Add. charge
EU23	Fork for tetraplegics (hand width 4-8 cm/1,6"-3,1") see exclusions 16.1) and 19.1)	Add. charge
EU24	Stick S80 (joystick handle 80 mm/ 3,1") see exclusions 16.1) and 19.1)	Add. charge
EU25	Soft ball, black covered see exclusions 16.1) and 19.1)	Add. charge
EU26	Ball top, small (diameter 43 mm/1,7") see exclusions 16.1) and 19.1)	Add. charge
EU35	Soft ball (diameter 30 mm/1,2") see exclusions 19.1)	Add. charge
EU50	Handheld programming device (dealer version, not subject to discount)	Add. charge
EU55	Programming software (not subject to discount, qualification required)	Add. charge

General accessories

ES39	Manual horn (kangaroo)	Add. charge
ES35	Therapy tray, swing-away (incl. mounting accessories, cut-out for control panel has to be custom-made) see exclusions 16.1)	Add. charge
ES40	Pennant	Add. charge
ES63	Bumper bar, detachable, silver metallic see exclusions 20.1)	Add. charge
EZ52	Tool kit with air pump	Add. charge
ES60	Vehicle transport kit according ISO 7176-19 see exclusions 20.2)	Add. charge

Lighting see exclusions 45.0)

ES08	Lighting for footpaths see exclusions 45.1)	Add. charge
ES06	Four way lighting (with indication and hazard light)	Add. charge

Speed

ET01	6 km/h	-
ET09	7 km/h see exclusions 28.1)	-

Power wheelchair for children *Skippi* 490E55=0000_K Order form.

Notes and exclusions

- 8.1) Possible only in combination with height-adjustable, detachable push handles
- 9.1) Cannot be combined with seat depth 28 cm / 11"
- 9.2) Cannot be combined with mechanical seat tilt
- 10.1) Cannot be combined with back angle -9/1/11/21° or 0/10/20/30°
- 10.2) Mandatory information in combination with unselected back angle
- 11.1) Possible only in combination with lap belt
- 12.1) Possible only in combination with lower leg length 23 cm / 9.1" to 38 cm / 15"
- 12.2) Possible only in combination with lower leg length 15 cm / 5.9" to 22 cm / 8.7"
- 12.3) Possible only in combination with lower leg length 15 cm / 5.9" to 33 cm / 13"
- 12.4) Possible only in conjunction with selected lower leg length
- 12.5) Not possible in conjunction with selected lower leg length
- 16.1) Cannot be combined with mid-tray control (MTC), right or left
- 16.2) Mandatory information in combination with control panel, standard
- 19.1) Only one joystick top is possible
- 20.1) Possible only in combination with lower leg length <= 32 cm
- 28.1) Not possible in conjunction with Germany or Austria as the country of destination
- 28.2) Not possible in conjunction with Argentina, Brazil, Canada, Columbia, Mexico or United States of America as the country of destination
- 45.0) Mandatory information in conjunction with all countries of destination except Other countries, Argentina, Australia, Brazil, France, Hong Kong, Japan, Canada, Columbia, Korea, Mexico, Russia, Switzerland, Thailand, United Kingdom or United States of America
- 45.1) Not possible in conjunction with Germany as the country of destination

**Power wheelchair for children *Skippi*
490E55=00000_K
Order form.**

Information



ED10 Push handles, height-adjustable, detachable



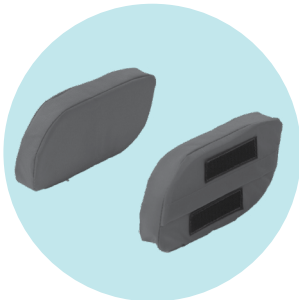
EC50 Electrical seat tilt



EC57 Electrical seat height adjustment



ED50 Electrical back support angle adjustment



EE37 Lateral pads



EB02 Individual leg supports



EB05 Single-panel leg supports



EB20 Elevating leg supports



EU85 Standard control panel



EU06 Mid-tray control



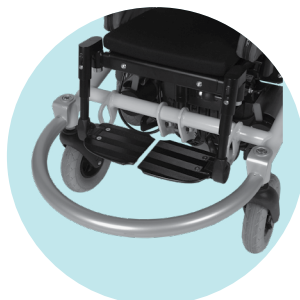
EU20 Control panel holder, swing-away in parallel



EU15 Attendant control



EU35 Soft ball



ES63 Bumper bar



EU08 Lightnig for footpaths



ES06 Four way lighting, at rear