



**MOBILITY PC PROGRAMMER
OEM**

ELECTRONIC MANUAL

SK76668-08

© PG Drives Technology 2010

All rights reserved.

This manual is furnished under copyright and may only be used in accordance with the terms laid out by PG Drives Technology.

The information in this manual is furnished for informational use only, is subject to change without notice, and should not be construed as a commitment by PG Drives Technology.

Except as permitted by such terms, no part of this manual may be reproduced, stored in a retrieval system, or transmitted, in any form or by any means electronic, mechanical, recording, or otherwise - without the prior written permission of PG Drives Technology. +44 (0) 1425 271444.

TABLE OF CONTENTS

About This Manual.....	4
Icons	4
Chapter 1 – Introduction.....	5
1 Introduction.....	6
1.1 Hardware.....	6
1.1.1 CD ROM	6
1.1.2 Programming Cable	6
1.1.3 USB-to-Serial Adapter Kit	6
1.1.4 PC Compatibility.....	6
1.1.5 Control System Compatibility	7
1.2 Installation.....	7
1.2.1 Communications Port.....	7
Chapter 2 – User Guide.....	8
1 Connection to a Controller.....	9
2 Initial Operation	10
3 The Application Window	10
3.1.1 Description	11
3.1.2 File Name.....	11
3.1.3 Group Menu Selection	11
3.2 Drop Down Menus.....	12
3.2.1 File.....	12
3.2.2 Controller.....	12
3.2.3 Tools	12
3.2.4 Help.....	13
3.3 Toolbar	13
3.4 Program Button.....	14
3.5 Program Display Area	14
3.6 Status Bar.....	15
4 System Log Window	16
5 Upgrades	17

About This Manual

This manual provides an introduction to the 'OEM' Mobility PC Programmer.

Icons

Throughout this manual, icons are used to draw the reader's attention.

The icons used are:



Note – A general point for best practice.



Caution – A point of safety, which if ignored, could result in damage to the control system or the vehicle.



Warning – A point of safety, which if ignored, could cause injury to the individual.



PG Drives Technology accepts no liability for any losses of any kind if these points are not followed.



CHAPTER I – INTRODUCTION

I Introduction

The Mobility PC Programmer is a Windows™ based software package that allows parameters to be viewed, edited, saved as files and copied between control systems. Parameters can be modified off-line and saved, creating new control system variants instantly and remotely. Whole sets of parameters can be transferred from programmer to control system, or vice-versa by a single command. In addition to intuitive programming, the Mobility PCP also provides invaluable diagnostic support and a 'password protection' utility, which makes it suitable for 'end-of line' programming.



It is possible to set up a control system so that it is unsuitable for some users or even some vehicles. For all of the above reasons it is important that you contact PG Drives Technology if you have the slightest doubts or if you need any advice on programming.



Programming and diagnostics should only be conducted by healthcare professionals with in-depth knowledge of PG Drives Technology electronic control systems. Incorrect programming could result in an unsafe setup of a vehicle for a user. PG Drives Technology accept no liability for any losses of any kind if the programming of the control system is altered from the factory preset values.

I.1 Hardware

The Mobility PC Programmer is comprised of the following parts.

CD ROM.

Programming Cable.

USB-to-Serial Adapter Kit.

Installation Manual.

I.1.1 CD ROM

The CD ROM contains installation, executable and information files.



An electronic copy of this manual is also stored on the disc.

I.1.2 Programming Cable

The programming cables connect the PC to the vehicle control system via a communications port. There are two cables supplied, one for wheelchair control systems which terminates at one end in a RS232 connector and at the other in a Neutrik plug suitable for connection to VR2, VSI and Pilot+, the other is for scooter control systems which terminates at one end in a RS232 connector and at the other in a Molex 'Mini fit Jnr.' 4 way plug suitable for connection to S-Drive and Egis control systems. As different control systems and PC's are developed, alternative cables may be necessary.

I.1.3 USB-to-Serial Adapter Kit

The USB-to-Serial Adapter Kit is designed for PCs that do not have a serial communications port. The kit comprises of a USB-to-Serial adapter plug, a driver disc and a USB extension cable.

I.1.4 PC Compatibility

To run the PC Programmer effectively, the minimum requirements are:

Microsoft Windows™ 2000.

CD ROM drive.

40Mb free storage space on hard drive.

Spare communications port.

1.1.5 Control System Compatibility

This issue of Mobility PC Programmer software is compatible with the following PG Drives Technology Control Systems:

- VR2
- VSI
- Pilot+
- S-Drive
- Egis

1.2 Installation

Once the CD ROM is loaded into the PC, the installation of the programmer is fully automatic.

The software will be installed in:

C:\Program Files\PG Drives Technology\PC Programmer – Mobility



When using foreign operating systems, the installation directory will be in that language's equivalent of 'Program Files'.

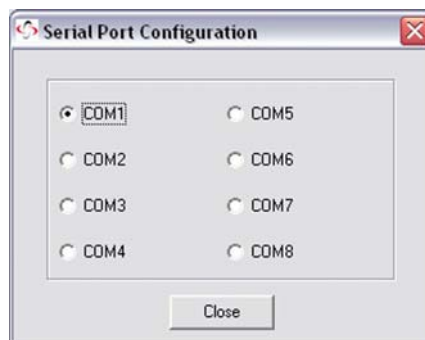
If the CD ROM fails to run automatically, double click the CD icon within 'My Computer'.

When the installation is complete, the icon shown below will appear on the PC's desktop screen and in a new shortcut folder on the 'Start' menu. Double-clicking the icon will start the PC Programmer software.



1.2.1 Communications Port

The PC Programmer's default communications port is 'COM1'. If necessary, a different communications port can be selected after the initial installation, using the 'Comms' utility in the 'Tools' drop-down menu.





CHAPTER 2 – USER GUIDE

I Connection to a Controller

For programming operations you can connect the PC Programmer cable to a control system at any time, regardless of the operating condition of the control system.



The control unit must be connected and ON before program transfer can be achieved.

If you are using the PC Programmer for diagnostics purposes, then to view the current trip code you must connect the PC Programmer while the control system is in a tripped state, i.e. the battery gauge is flashing rapidly.

To attach the control system to the PC use the programming cable as follows:



If the PC does not have a serial communications connector, use the USB-to-Serial adapter plug supplied.

- Insert the plug into one of the PC's USB ports.
- When prompted, browse for the adapter's drivers (these are found on the accompanying disc).
- Once the drivers have been installed successfully, connect the programming cable as described below.



Only use the adapter plug supplied with the PC Programmer. The use of other adapters may result in an inconsistent communications signal.

The PC Programmer should be connected to the controller as follows.

- Insert the programming cable's D-type plug into the PC's serial communications port or to a USB port, via the adapter plug.
- Insert the programming cable's 4-way Molex 'Mini-Fit Jr.' plug into the controller's dedicated programming connector.
- Switch the controller on.

The 'Comms Active' message should be displayed in the PC Programmer's Status Bar – see Section 3.6 for details.

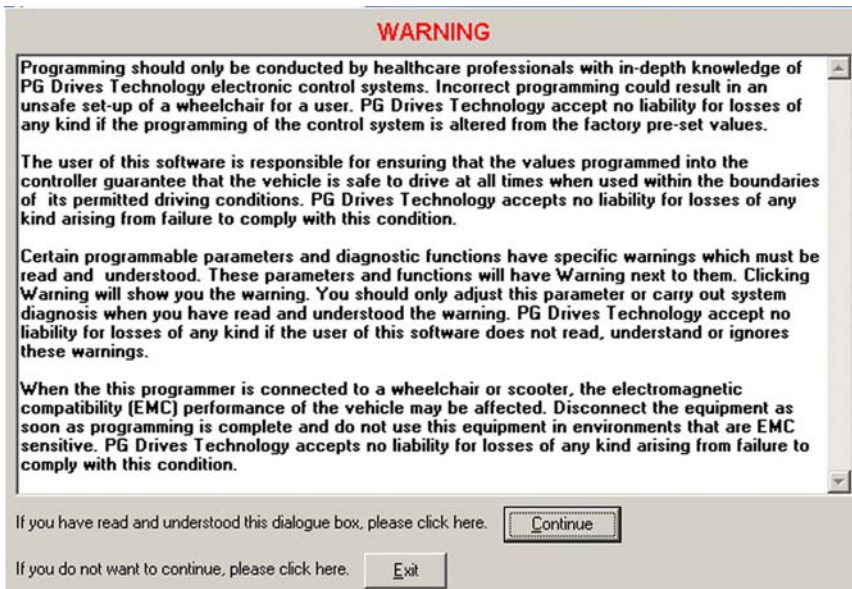


Remember to disconnect the PC Programmer from the controller before vehicle drive commences.

2 Initial Operation

PC Programmer can be used to edit existing control systems or to perform initial programming acts. Once a program has been loaded into PC Programmer editing tasks can be performed at any time.

Upon opening PC Programmer the following warning window will appear. It is important that this warning is read and understood before programming commences.



Clicking Continue opens the PC Programmer Application Window. If a control system is connected, and ON, then the status bar will state what type the connected system is.



If the Control System is not supported by the version of PC programmer currently installed then the program will alert the user.

Once opened one of three things must occur to begin using the PC Programmer.

- A new Template must be opened. – File>New
- A previously saved file must be opened – File>Open.
- A file must be read from the controller – Controller>Read From Controller.

3 The Application Window

For ease of description the application window will be separated into 6 different sections. These are:

- 3.1 - Program Information Bar
- 3.2 - Drop Down Menus
- 3.3 - Toolbar
- 3.4 - Program Button
- 3.5 - Program Display Area
- 3.6 - Status Bar

3.1 Program Information Bar

3.1.1 Description

The description box displays user defined information about the current program being viewed. When a new program is opened the description will read Default Program until it is adjusted



Original



Adjusted

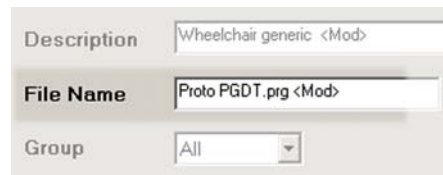
As soon as the program is adjusted a <Mod> notation will appear after the description.

3.1.2 File Name

The file name box displays the user defined name for the current program being viewed. When a new program is opened the name will read Default Program until it is adjusted



Original

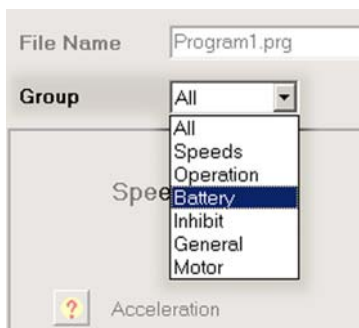


Adjusted

As soon as the program is adjusted a <Mod> notation will appear after the name.

3.1.3 Group Menu Selection

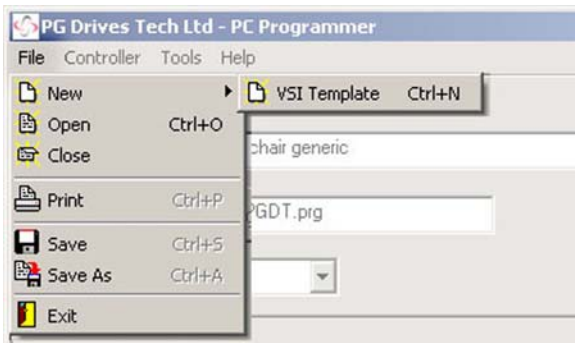
The Group menu selection is a drop down menu. The menu lists the program parameter groups which are available for display and adjustment either individually or as a whole.



3.2 Drop Down Menus

3.2.1 File

This menu contains standard Windows operational elements.



When opening a New program the menu will display the current list of templates available. One of the templates must be selected.

When the print option is used only the parameters listed within the Group Menu Selection will be printed.

3.2.2 Controller

This menu contains specific programming tools.



Write Controller - Downloads ALL the program parameter information into the control system connected.

Read Controller - Inputs all the program parameter information from the control system connected.

Preset - Restores all program parameters to the control system's PRESET values.

3.2.3 Tools

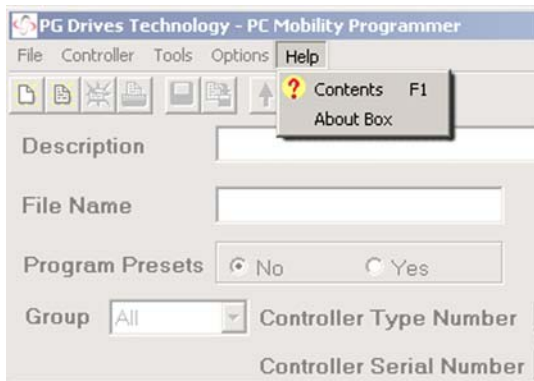
This menu contains specific control system information tools.



- Diagnostics - If the connected control system is in a tripped state then this option will display the specific trip code and type.
- System Log - Displays the diagnostic Log of the connected control system. Within the window is also the option to clear the Log information. For detailed information on the System Log window refer to section 4.
- Timers - Displays the connected control system’s timer information. This is in the form of an hours run timer, which refers to the time the control system has been driven.
- Controller Info - Displays control system specific information such as the Controller Serial Number.
- Protect - Allows PC Programmer to be secured using a password. Once the program has been protected users can only Open/Close, Read From / Write To and Program attached control systems. When a file is protected PC Programmer will only allow ALL groups to be viewed.
- Comms - Allows the user to select which communication port to attach the control system to the PC.
- File Type - Displays the format in which the file was created. ie. Dealer, OEM or Manufacturing Programmer.

3.2.4 Help

This menu contains specific information about the PC Programmer software.



- Contents - Displays the available Help topics. This follows a Windows typical control method.
- About Box - Displays the PC Programmer software issue information.

3.3 Toolbar

The toolbar icons are shortcuts to the most regularly used functions within the drop down menus.



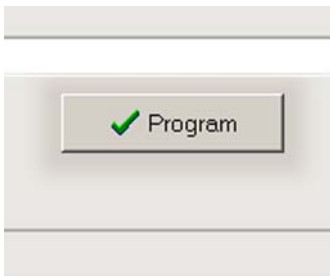
The Select File Template window will only appear when the New File button is clicked.

Viewing the different file types available is achieved using the arrows.

To select the desired file type, simply click on the name when it appears.

3.4 Program Button

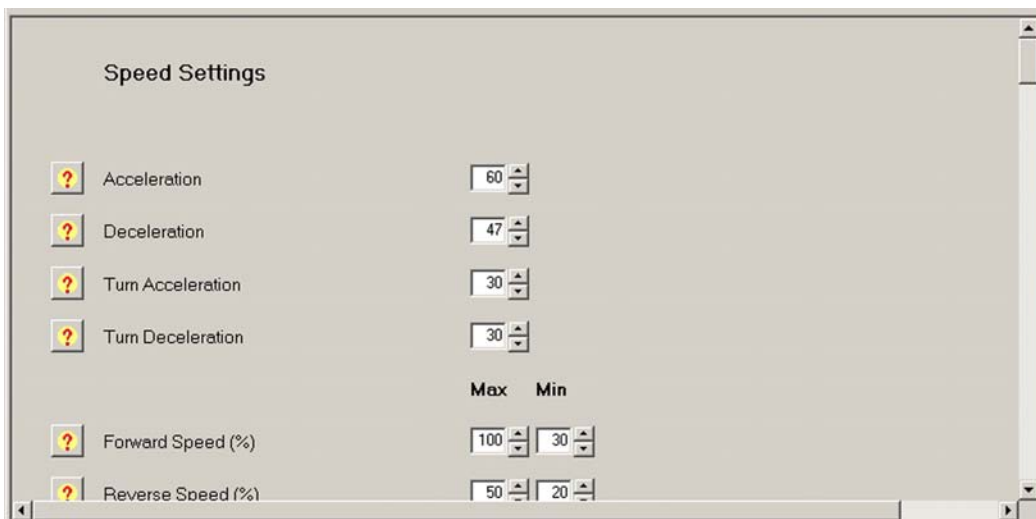
Downloads the program parameter information from the SELECTED group into the control system connected.



3.5 Program Display Area

All adjustments to the program parameters are made within this window.

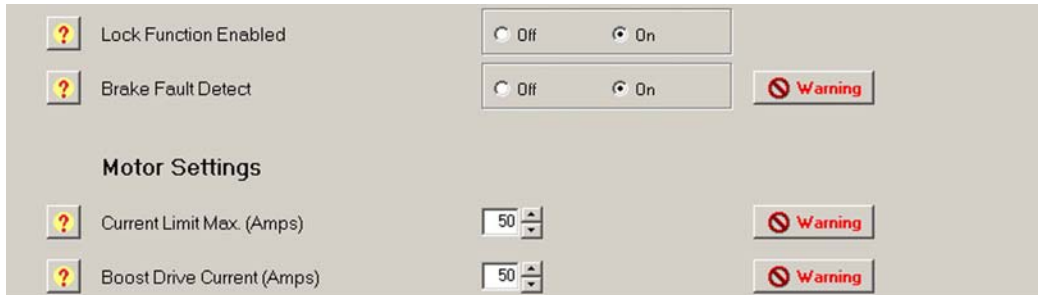
Each programmable parameter has its own adjustable entry. All of these parameters have a Help icon located next to them which give a brief description of what the parameter controls.



Where a parameter has a Warning icon the warning should be read and understood before adjustment to the parameter is attempted.

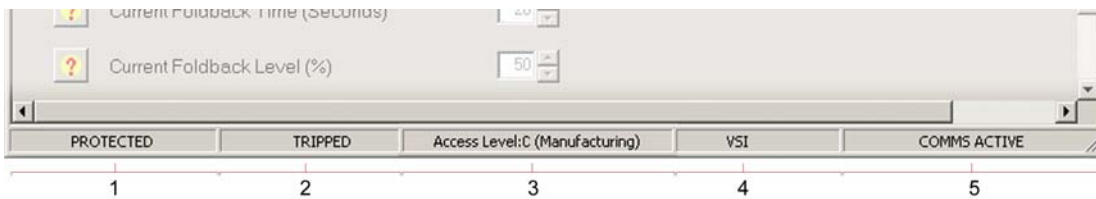
To adjust a parameter, move the mouse cursor to the parameter reading and click on the arrows to increase or decrease the reading.

Where there is a toggle selection instead of a reading then simply click on the required selection.



3.6 Status Bar

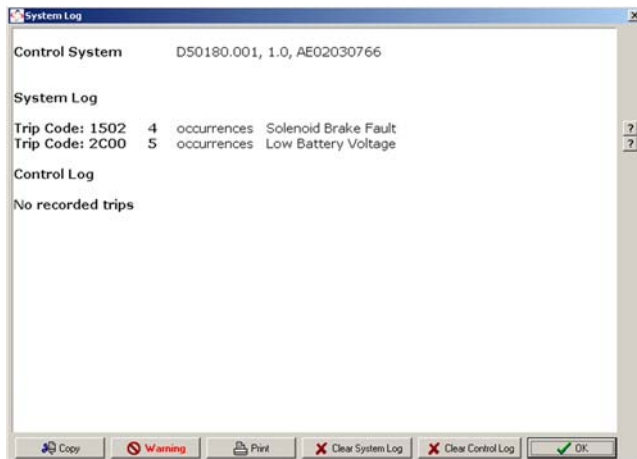
Displays program relevant information.



- 1 - Protect - When the PC Programmer has been password protected the protection box will show PROTECTED to alert the user.
- 2 - Trip Box - When the connected control system has tripped the trip box will display TRIPPED to alert the programmer. To view the trip code select Diagnostics in the Tools drop down menu.
- 3 - Access Level - Displays the level of access available with the installed version of PC Programmer.
The Three types of access are:
Level: A (Dealer)
Level: B (OEM)
Level: C (Manufacturing)
- 4 - Control System - Displays the type of control System currently connected to the PC.
- 5 - Activity - Displays if a control system is switched ON. If a control system is connected but not ON then the Activity will display COMMS INACTIVE.

4 System Log Window

Displays Control system trip information.



Control System - Details the type of control system currently connected to the PC, the control system's software issue and serial number.

System Log - The system is tripped out in response to an issue external to the control system. The system log lists the last 8 types of system trip that has occurred since the system was either initialized or last cleared. Each type of trip has an occurrence value and a brief description.



If there is a control trip then the system log records it under a general code which alerts the technician to check the control log.

Control Log - The control log registers a trip in response to an issue within the control system. The system log lists the last 8 types of control trip that has occurred since the system was either initialized or last cleared. Each type of trip has an occurrence value and a brief description.



There are no serviceable parts within any of the PG Drives Technology control systems. Consequently, any defective units must be returned to PG Drives Technology or a PG Drives Technology approved service organization for repair. PG Drives Technology accept no liability for any losses of any kind arising from unauthorized opening, adjustment or modification to any component of a control system.



A description of the each trip code can be found within the Help facility under - Index

The system log window has a row of options along the base. These are:

- Copy - Allows the user to copy and paste the logs to another file.
- Warning - It is important that this warning is read and understood before further action is taken to correct any trips.
- Print - Prints the system log window to the PC's default printer.
- Clear System - Clears the control system's system log.
- Clear Control- Clears the control system's control log.
- OK - Returns the user to the program display area.

5 Upgrades

Once a copy of the PC Programmer has been purchased, the user is entitled to free upgrades. This means each time a new programmable function or utility is introduced, the programmer can be updated to the latest version.

To qualify for free upgrades, the following information should be sent to ssrf@pgdt.com:

- User name
- Business name
- Business address
- Product type – this is the number, 'Dxxxx/x', which can be located on the packing box, the CD wallet and the cable labels.
- Product serial number – this is the number, *xxxxxx*, which can be located on the packing box, the CD wallet and the cable labels.

Once qualification has been recognized, an email will be sent containing a unique username and password.

This username and password allows access to the latest software via the www.pgdt-ssrf.com website.

This is achieved as follows:

- Upon entering www.pgdt-ssrf.com enter the unique username and password.
- Select the relevant software group from the list of groups displayed.
- Click on the relevant file to start the download.
- Follow the instructions on screen.



It is recommended that the Issue Log is read prior to a download being attempted. The Issue Log contains a complete history of the improvements, adjustments and changes created within each issue.



The version of software currently installed on the PC can be checked by using the About Box located in the Help pull-down menu within the Mobility PC Programmer.



Each upgrade will have an electronic manual specific to that version within the self-extracting Zip.