

AXIOM

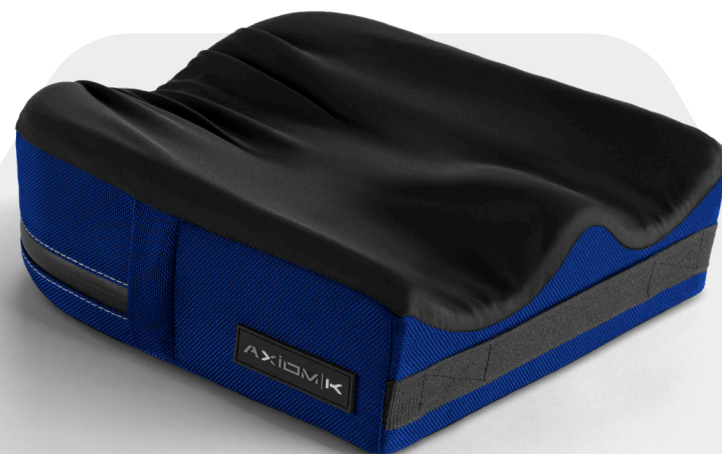
for Kids





Inspired by Kids

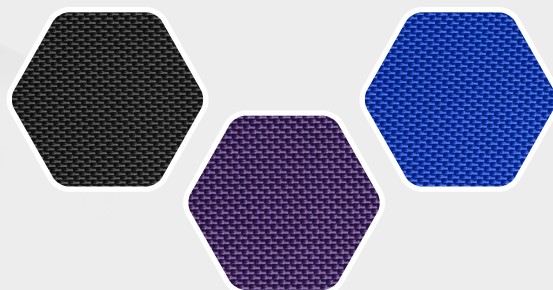
Axiom's pediatric seating line is designed for the unique needs of our smallest clients. Growing bodies have different positioning needs, come in various shapes, and simply weigh less. This is precisely what inspired the **Axiom for Kids** line - to provide kids with better seating products built specifically for them.



Kids come in all shapes and sizes

Axiom for Kids cushions deliver a better fit for optimal comfort and outcomes by using varying foam softness and shapes by cushion size.

Available in two models:
PXP (Positioning) and **PXSP** (Skin Protection & Positioning).



Covers in color

Choose from 3 color options to complement the mobility base and the personal style and preferences of the smallest clients. Available in Blue, Purple and Black.

Accidents happen

Made from high-quality materials, our covers are durable, wipeable, breathable, and easy to clean. Just wipe and continue with your day! Extra cover included with each cushion order.



AL Back with contoured laterals

Get the best fit

Setup and growth is easy with intuitive depth and angle adjustments, along with the ability to fit chair widths +/- 1". With three models and three lateral options - Axiom for Kids is the most versatile range of pediatric back solutions on the market.



DEX for Kids

Let's grow together

Designed with growing kids in mind, the Axiom for Kids back offering provides depth and width adjustment through the back shell, laterals, and mounting hardware. With contour shapes that change with size, our backs provide the confidence of a perfect fit as your child grows. The vapor permeable cover promotes air flow to ensure added comfort.

Photo features the PL Back



Hardware that multitasks

DEX for Kids hardware works with all tube diameters and utilizes the DEX 1" locking clamp, providing reliable clamp force, and minimizing back cane interference so you can easily mount the back exactly where you need it.

DEX for Kids comes with a standard lockout feature so curious hands, classmates or backpacks don't accidentally disengage the release.

Cushion Specs

Description

HCPCS Code (US Only)

Size Offering

Extra Cover Included

Wipeable Cover

Color Availability

Max User Weight

PXP Positioning	PXSP Skin Protection & Positioning
	
Single density contoured foam	Dual density contoured foam
E2605	E2607
Width: 8"-16" (20 - 40.5cm) Depth: 8" - 18" (20 - 45.5cm)	
Yes	
Yes	
Black, Purple, Blue	
165 lbs. (75kg)	

Back Specs

Description

HCPCS Code (US Only)

Size Offering

Back Shell Color Availability

Attaching Back Hardware

Back Adjustability

Fits Chair Width

Max User Weight

Lateral Adjustability

Configured Weight

Transit

Tested Tough

<div>PXPL</div> <div>Posterior Lateral</div> <div></div>	<div>PXAL</div> <div>Adjustable Lateral</div> <div></div>	<div>PXALCL</div> <div>Adjustable Contoured Laterals</div> <div></div>
Formed back with lateral and lumbar supports.	Planar back with option for fixed or swing-away lateral supports.	Contour back with adjustable contoured lateral supports.
E2615	E2291	E2293
Width: 10"-16" (23 - 40.5cm) Depth: 10" - 18" (23 - 45.5cm)		
20+ Colors (see order form for complete offering)		
DEX for Kids (includes safety lockout), fits 3/4" to 1-1/8" tube diameter (no adaptors required)		
Angle: +/- 20 degrees Depth: 2" standard / 4" with optional extension		
Chair Width +/- 1		
165 lbs. (75kg)		
No	+2" / -1" Lateral Adjustment	
12" wide LW Klik wheelchair with Axiom for Kids PL Back - 15.8 lbs. (7.2kg)		
Tested according to the dynamic test requirements of ANSI/RESNA WC-4, Section 20		
Tested to ISO-16840 for strength, durability, and reliability		

TESTED

TOUGH

AXIOM

