




Leckey Horizon


Name	
Date:	
Email	
Contact Number	
Invoice Address	
Delivery Address	



Quote Order

Purchase Order		
----------------	--	--



Item Code	Description	Quantity	Available for Trial
Chassis			
			
<input type="checkbox"/>	LHZ/1/177-EXP	Size 1 Horizon Chassis	✓
<input type="checkbox"/>	LHZ/2/177-EXP	Size 2 Horizon Chassis	✓
<input type="checkbox"/>	LHZ/3/177-EXP	Size 3 Horizon Chassis	✓
<input type="checkbox"/>	LKSI127	Horizon Stander Charger	✓

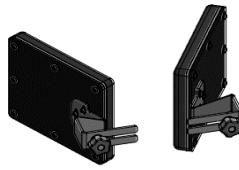
Spine			
			
<input type="checkbox"/>	LHZ/1/198-GRB-EUR	Horizon Size 1 Extrusion with Chest Pad Hip Pad Chest Laterals - Grey	
<input type="checkbox"/>	LHZ/1/198-GB-EUR	Horizon Size 1 Extrusion with Chest Pad Hip Pad Chest Laterals - Green	
<input type="checkbox"/>	LHZ/1/198-BB-EUR	Horizon Size 1 Extrusion with Chest Pad Hip Pad Chest Laterals - Blue	✓
<input type="checkbox"/>	LHZ/2/198-GRB-EUR	Horizon Size 2 Extrusion with Chest Pad Hip Pad Chest Laterals - Grey	
<input type="checkbox"/>	LHZ/2/198-GB-EUR	Horizon Size 2 Extrusion with Chest Pad Hip Pad Chest Laterals - Green	
<input type="checkbox"/>	LHZ/2/198-BB-EUR	Horizon Size 2 Extrusion with Chest Pad Hip Pad Chest Laterals - Blue	✓
<input type="checkbox"/>	LHZ/3/198-GRB-EUR	Horizon Size 3 Extrusion with Chest Pad Hip Pad Chest Laterals - Grey	✓
<input type="checkbox"/>	LHZ/3/198-GB-EUR	Horizon Size 3 Extrusion with Chest Pad Hip Pad Chest Laterals - Green	
<input type="checkbox"/>	LHZ/3/198-BB-EUR	Horizon Size 3 Extrusion with Chest Pad Hip Pad Chest Laterals - Blue	

Pelvic Support			
 			
	Hip Laterals		
<input type="checkbox"/>	LHZ/1/164	Horizon Size 1 Hip Laterals	
<input type="checkbox"/>	LHZ/2/164	Horizon Size 2 Hip Laterals	
<input type="checkbox"/>	LHZ/3/164	Horizon Size 3 Hip Laterals	✓
<input type="checkbox"/>	LHZ/1/181	Horizon Size 1 SUPINE Pelvic Belt	✓
<input type="checkbox"/>	LHZ/2/181	Horizon Size 2 SUPINE Pelvic Belt	✓
<input type="checkbox"/>	LHZ/3/181	Horizon Size 3 SUPINE Pelvic Belt	✓

Tray			
  			
	Supine Stander tray	Prone Stander tray	Padded tray insert
<input type="checkbox"/>	LHZ/1/158	Horizon Size 1 PRONE TRAY	
<input type="checkbox"/>	LHZ/1/143	Horizon Size 1 SUPINE TRAY	
<input type="checkbox"/>	LHZ/2/158	Horizon Size 2-3 PRONE TRAY	✓

<input type="checkbox"/>	LHZ/2/143	Horizon Size 2-3 SUPINE TRAY		✓
<input type="checkbox"/>	LHZ/1/109	Padded Tray Insert for Size 1 Tray		
<input type="checkbox"/>	LHZ/2/109	Padded Tray Insert for Size 2/3 Tray		
<input type="checkbox"/>	101-3690	Horizon Size 1 Mygo Stander Tray for Horizon		
<input type="checkbox"/>	101-3691	Horizon Size 2-3 Mygo Stander Tray for Horizon		

Chest Support (Laterals Included with Extrusion)



<input type="checkbox"/>	101-2120	Hyperextension Pads for Laterals		
--------------------------	----------	----------------------------------	--	--

Knees



Knee Pads



Knee Extension Brackets

<input type="checkbox"/>	LHZ/1/167	Horizon Size 1 Knees (pair) Short adjustment = - 10 to + 45mm or long adjustment = - 10 to + 85mm		✓
<input type="checkbox"/>	LHZ/2/167	Horizon Size 2-3 Knees (pair) Short adjustment = - 10 to + 45mm or long adjustment = - 10 to + 85mm		✓
<input type="checkbox"/>	LHZ/4/167	Horizon Size 4 Large Knees (pair) Short adjustment = - 10 to + 45mm or long adjustment = - 10 to + 85mm		✓
<input type="checkbox"/>	LHZ/1/104	Horizon Size 1 Wide Knees (pair)		
<input type="checkbox"/>	LHZ/2/104	Horizon Size 2-3 Wide Knees (pair)		
<input type="checkbox"/>	101-2224	Medium Knee Adjustment Bracket (125mm-175mm adjustment)		✓
<input type="checkbox"/>	101-2225	Long Knee Adjustment Bracket (175mm-225mm adjustment)		✓

Horizon Headrests



Flat Headrest



Head lateral supports



Extended Head Rest Brackets

<input type="checkbox"/>	LHZ/1/169	Horizon Size 1 Headsupport complete		✓
<input type="checkbox"/>	LHZ/2/169	Horizon Size 2-3 Headsupport complete		✓
<input type="checkbox"/>	LHZ/2/117	Horizon Size 2-3 Head Lateral Supports		✓
<input type="checkbox"/>	101-1959	Headrest 4 Inch Extension Bracket		✓

Whitmyer Plush



<input type="checkbox"/>	PRO-P1W	Plush Headrest, 10 Inch with 8 Inch PRO Bar		
<input type="checkbox"/>	PRO-P2W	Plush Headrest, 14 Inch with 8 Inch PRO Bar		
<input type="checkbox"/>	PRO-P4W	Plush Headrest, 19 Inch with 8 Inch PRO Bar		
<input type="checkbox"/>	PRO-AP1L	Adjust-A-Plush Narrow Headrest with 8 Inch PRO Bar		
<input type="checkbox"/>	PRO-AP2L	Adjust-A-Plush Standard Headrest with 8 Inch PRO Bar		

Whitmyer Contoured Cradle



<input type="checkbox"/>	PRO-CCS2	Small Contoured Cradle Head on 8 Inch PRO Bar		
<input type="checkbox"/>	PRO-CCS3	Medium Contoured Cradle Head on Pro 8 Inch PRO Bar		
<input type="checkbox"/>	PRO-CCS4	Large Contoured Cradle Head on 8 Inch PRO Bar		

Whitmyer Heads Up



<input type="checkbox"/>	PRO-HU-ISSCL-O5	Heads Up Short Infant (Size 1 - 8.3 Cm) including chin prompt		✓
<input type="checkbox"/>	PRO-HU-SSSCL-O6	Heads Up Short Child (Size 2 - 10.1 Cm) including chin prompt		✓
<input type="checkbox"/>	PRO-HU-MSSCL-O8	Heads Up Short Teenager (Size 3 - 11.6 Cm) including chin prompt		✓
<input type="checkbox"/>	PRO-HU-LSSCL-O10	Heads Up Short Adult (Size 4 - 14.7 Cm) including chin prompt		✓
<input type="checkbox"/>	PRO-HU-ITSCL	Heads Up Tall Infant (Size 1 - 8.3 Cm) including chin prompt		✓
<input type="checkbox"/>	PRO-HU-STSCL	Heads Up Tall Child (Size 2 - 10.1 Cm) including chin prompt		✓
<input type="checkbox"/>	PRO-HU-MTSCL	Heads Up Tall Teenager (Size 3 - 11.6 Cm) including chin prompt		✓
<input type="checkbox"/>	PRO-HU-LTSCL	Heads Up Tall Adult (Size 4 - 14.7 Cm) including chin prompt		✓

Whitmyer Complex



<input type="checkbox"/>	PRO-3W	Paediatric S.O.F.T. Three Pad Head Support with 8" PROvertical mounting bar		
<input type="checkbox"/>	PRO-4W	Small Adult S.O.F.T. Three Pad Head Support with 8" PROvertical mounting bar		
<input type="checkbox"/>	PRO-1W	Adult S.O.F.T. Three Pad Head Support with 8" PROvertical mounting bar		

Whitmyer Forehead Support



<input type="checkbox"/>	D1010	Whitmyer Bracket for Cradle headrest to attach forehead support		
<input type="checkbox"/>	DFS3	DYNAMIC FOREHEAD ASSEMBLY - Paediatric		
<input type="checkbox"/>	DFS1	DYNAMIC FOREHEAD ASSEMBLY - Adult		
<input type="checkbox"/>	D1017	DYNAMIC FOREHEAD STRAP (NEOPRENE AGAINST SKIN)		
<input type="checkbox"/>	D1018	DYNAMIC FOREHEAD STRAP (TOWELLING AGAINST SKIN)		

Whitmyer Bars and Accessories

<input type="checkbox"/>	PRC7030	Whit 8" vertical/horizontal PRO mount		✓
<input type="checkbox"/>	PRC7070	PRO 63mm Offset Bar		
<input type="checkbox"/>	M9450	Dynamic Headrest Kit		
<input type="checkbox"/>	LFC25L	Single Lateral Facial Support for 3 Pad System		
<input type="checkbox"/>	LFC25-CSL	Single Lateral Facial Support for Contoured Cradle		
<input type="checkbox"/>	LFC25-PLL	Single Lateral Facial Support for Plush		
<input type="checkbox"/>	M5200	Swingaway System for headrests		

Foot Support



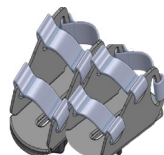
Flip Up Footplate



3D Footplate



Sandals



Open-back sandals



Booties



Ankle Huggers



Ankle Wraps

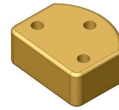
<input type="checkbox"/>	LHZ/1/161	Horizon Size 1 Flip-up Footplate Assy		✓
--------------------------	-----------	---------------------------------------	--	---

<input type="checkbox"/>	LHZ/2/161	Horizon Size 2-3 Flip-up Footplate Assy		✓
<input type="checkbox"/>	LHZ/3/160	Horizon Size 1-3 3D Footplate Assy INC. SANDALS		
<input type="checkbox"/>	152-1600	Sandals Size 1		✓
<input type="checkbox"/>	152-2600	Sandals Size 2		✓
<input type="checkbox"/>	152-3600	Sandals Size 3		✓
<input type="checkbox"/>	LHZ/1/100	Size 1 open-back sandals		
<input type="checkbox"/>	LHZ/2/100	Size 2 open-back sandals		
<input type="checkbox"/>	LHZ/3/100	Size 3 open-back sandals		
<input type="checkbox"/>	LHZ/4/100	Size 4 open-back sandals		
<input type="checkbox"/>	AH01	Ankle Huggers		
<input type="checkbox"/>	173-2305	Small Ankle Wraps (use with sandals)		
<input type="checkbox"/>	173-3305	Large Ankle Wraps (use with sandals)		

Accessories



Spine Extension



Lateral Spacer

<input type="checkbox"/>	LHZ/1/166	Horizon Bracket to extend outer shaft/spine by 150mm		✓
<input type="checkbox"/>	RAF-4-1723	Horizon 1 Inch Lateral Spacer		✓

Harness



<input type="checkbox"/>	155-N001-L600	Small Butterfly Harness & attachment straps		✓
<input type="checkbox"/>	155-N001-L601	Medium Butterfly Harness & attachment straps		✓
<input type="checkbox"/>	155-N001-L602	Large Butterfly Harness & attachment straps		
<input type="checkbox"/>	155-N001-L603	X Large Butterfly Harness & attachment straps		

	Size 1	Size 2	Size 3
Age	4-10	8-14	14-Adult
User Height	1000mm-1400mm [39.3"-55.1"]	1400mm-1800mm [55.1"-70.8"]	1550mm-1800mm [61"-70.8"]
Max. User Weight	50kg [110lbs]	80kg [176lbs]	100kg [220lbs]
Shoulder Height (footplate to top of pad)	820mm-1150mm [32.2"-45.2"]	1000mm-1450mm [39.3"-57"]	1000mm-1450mm [39.3"-57"]
Hip Pad Height (footplate to top of pad)	450mm-750mm [17.7"-29.5"]	750mm- 950mm [29.5"-37.4"]	750mm-1150mm [29.5"-45.2"]
Hip Pad Width	175mm-270mm [6.8"-10.6"]	210mm-390mm [8.2"-15.3"]	310mm-470mm [12.2"-18.5"]
Knee Height (footplate to middle of pad)	250mm- 450mm [9.8"-17.7"]	400mm-550mm [15.7"-21.6"]	400mm-650mm [15.7"-25.5"]
Width Between Chest Laterals	200mm-300mm [7.8"-11.8"]	240mm-380mm [9.4"-14.9"]	340mm-460mm [13.3"-18.1"]
Footplate Angle Adjustment +/-	10°	10°	10°
Angle Adjustment	0°-90°- Prone 0°-90°- Supine	0°-90°- Prone 0°-90°- Supine	0°-90°- Prone 0°-90°- Supine
Tray Angle Adjustment	0°-40°- Prone +/- 20°/30°- Supine	0°-40°- Prone +/- 20°/30°- Supine	0°-40°- Prone +/- 20°/30°- Supine

Comments